

# OGG1 Rabbit pAb

货号: **AYP11959**

## 产品信息

反应	Human,Mouse
宿主	Rabbit
克隆性	Polyclonal
预测反应	<b>WB:</b> Homo sapiens
应用	<a href="#">WB</a>
推荐浓度	<b>WB:</b> 1:200 - 1:1000
理论分子量	22kDa/36kDa/38kDa/39kDa/40kDa/45kDa/47kDa
实测分子量	36kDa
形式	Liquid
保存条件	Store at -20°C. Avoid freeze / thaw cycles. Buffer: PBS with 0.02% sodium azide,50% glycerol,pH7.3.
偶联物	Unconjugated
阳性对照	HepG2
细胞定位	Mitochondrion,Nucleus,Nucleus matrix,Nucleus speckle,nucleoplasm
纯化	Affinity purification

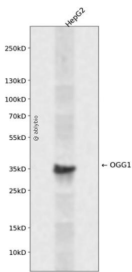
## 抗原信息

抗原信息	Recombinant fusion protein containing a sequence corresponding to amino acids 1-345 of human OGG1 (NP_002533.1).
序列	MPARALLPRRMGHRTLASTPALWASIPCPRSELRLDLVPSGQSFRWREQSPAHWSGVLADQVWTLTQTEEQLHCTVYR GDKSQASRPTPDELEAVRKYFQLDVTLAQLYHHWGSVDSHFQEVAKFQGVRLLRQDPIECLFSFICSSNNNIARITGMV ERLCQAFGPRLIQLDDVTYHGFPSLQALAGPEVEAHLRKLGLGYRARYVSASARAILEEQGGLAWLQQLRESSYEEAHKAL CILPGVGTKVADCICLMALDKPQAVPVDVHMWHIAQRDYSWHPTTSQAKGSPQTNKELGNFFRSLWGPYAGWAQAVL FSADLRQSRHAQEPPAKRRKSGKPEG

## 靶点信息

研究背景	This gene encodes the enzyme responsible for the excision of 8-oxoguanine, a mutagenic base byproduct which occurs as a result of exposure to reactive oxygen. The action of this enzyme includes lyase activity for chain cleavage. Alternative splicing of the C-terminal region of this gene classifies splice variants into two major groups, type 1 and type 2, depending on the last exon of the sequence. Type 1 alternative splice variants end with exon 7 and type 2 end with exon 8. All variants share the N-terminal region in common, which contains a mitochondrial targeting signal that is essential for mitochondrial localization. Many alternative splice variants for this gene have been described, but the full-length nature for every variant has not been determined.
基因ID	4968
基因名	OGG1
Swiss	O15527
别名	OGG1;HMMH;HOGG1;MUTM;OGH1

## 产品验证



Western blot analysis of OGG1 expressed in HepG2 using OGG1 Rabbit pAb at 1:1000. Secondary antibody: HRP Goat Anti-Rabbit IgG (H+L) at 1:5000. Lysates/proteins: 30ug per lane. Blocking buffer: 5% non-fat dry milk in TBST. Detection: ECL Enhanced Kit. Exposure time: 120s.

## 实验步骤

访问官网浏览详情: [www.ablybio.cn](http://www.ablybio.cn)