

CYLD Rabbit pAb

货号: **AYP11944**

产品信息

反应	Human,Mouse,Rat
宿主	Rabbit
克隆性	Polyclonal
预测反应	WB: Homo sapiens , Rattus norvegicus
应用	WB IHC
推荐浓度	WB: 1:100 - 1:500 IHC: 1:50 - 1:200
理论分子量	107kDa
实测分子量	107KDa
形式	Liquid
保存条件	Store at -20°C. Avoid freeze / thaw cycles. Buffer: PBS with 0.02% sodium azide,50% glycerol,pH7.3.
偶联物	Unconjugated
阳性对照	293T,Mouse brain,Rat testis
细胞定位	Cell membrane,Cytoplasm,Cytoplasmic side,Peripheral membrane protein,centrosome,cilium basal body, cytoskeleton,microtubule organizing center,perinuclear region,spindle
纯化	Affinity purification

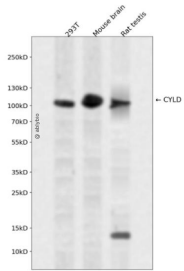
抗原信息

抗原信息	Recombinant fusion protein containing a sequence corresponding to amino acids 654-953 of human CYLD (NP_001035877.1).
序列	TKIMKLRKILEKVEAASGFTSEEKDPPEEFLNLFHHILRVEPLLKIRSAGQKVQDCYFYQIFMEKNEKVGVPPTIQQLLEWSFINS NLKFAEAPSLIIQMFRFGKDFKLFKKIFPSLELNITDLEDTPRQCRICGGLAMYECRECYDDPDISAGKIKQFCKTCNTQVH LHPKRLNHKYNPVSLPKDLPDWDWRHGCIQCQNMELFAVLCIETSHYVAFVKYKDDSAWLFFDSMADRDRGGQNGFNI PQVTPCEVGEYLKMSLEDLHSLDSRRIQGCARRLLCDAYMCMYQSPTMSLYK

靶点信息

研究背景	This gene encodes a cytoplasmic protein with three cytoskeletal-associated protein-glycine-conserved (CAP-GLY) domains that functions as a deubiquitinating enzyme. Mutations in this gene have been associated with cylindromatosis, multiple familial trichoepithelioma, and Brooke-Spiegler syndrome. Alternate transcriptional splice variants, encoding different isoforms, have been characterized.
基因ID	1540
基因名	CYLD
Swiss	Q9NQC7
别名	CYLD;BRSS;CDMT;CYLD1;CYLDI;EAC;MFT;MFT1;SBS;TEM;USPL2

产品验证



Western blot analysis of CYLD expressed in 293T, Mouse brain, Rat testis using CYLD Rabbit pAb at 1:1000. Secondary antibody: HRP Goat Anti-Rabbit IgG (H+L) at 1:5000. Lysates/proteins: 30ug per lane. Blocking buffer: 5% non-fat dry milk in TBST. Detection: ECL Enhanced Kit. Exposure time: 120s.

实验步骤

访问官网浏览详情: www.ablybio.cn