

PSMB6 Rabbit pAb

货号: **AYP11943**

产品信息

反应	Human,Mouse,Rat
宿主	Rabbit
克隆性	Polyclonal
预测反应	WB: Homo sapiens
应用	WB IHC IF/ICC
推荐浓度	WB: 1:500 - 1:1000 IHC: 1:50 - 1:100 IF/ICC: 1:50 - 1:100
理论分子量	25kDa
实测分子量	22KDa
形式	Liquid
保存条件	Store at -20°C. Avoid freeze / thaw cycles. Buffer: PBS with 0.05% proclin300,50% glycerol,pH7.3.
偶联物	Unconjugated
阳性对照	HeLa,HepG2,MCF7
细胞定位	Cytoplasm,Nucleus
纯化	Affinity purification

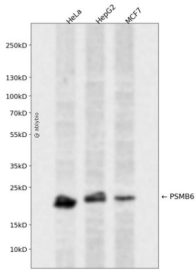
抗原信息

抗原信息	Recombinant fusion protein containing a sequence corresponding to amino acids 35-239 of human PSMB 6 (NP_002789.1).
序列	TTIMAVQFDGGVVLGADSRRTTGSYIANRVTDKLTPIHDRIFCCRSGSAADTQAVADAVTYQLGFHHSIELNEPPLVHTAASL FKEMCYRYREDLMAGIIIAGWDPQEGGQVYSVPMGGMMVRQSF AIGGSGSSYIYGVDATYREGMTKEECLQFTANALA LAMERDGSSGGVIRLAAIAESGVERQVLLGDQIPKFAVATLPPA

靶点信息

研究背景	The proteasome is a multicatalytic proteinase complex with a highly ordered ring-shaped 20S core structure. The core structure is composed of 4 rings of 28 non-identical subunits; 2 rings are composed of 7 alpha subunits and 2 rings are composed of 7 beta subunits. Proteasomes are distributed throughout eukaryotic cells at a high concentration and cleave peptides in an ATP/ubiquitin-dependent process in a non-lysosomal pathway. The encoded protein is a member of the proteasome B-type family, also known as the T1 B family, and is a 20S core beta subunit in the proteasome. Alternatively spliced transcript variants encoding multiple isoforms have been observed for this gene.
基因ID	5694
基因名	PSMB6
Swiss	P28072
别名	PSMB6;DELTA;LMPY;Y

产品验证



Western blot analysis of PSMB6 expressed in HeLa, HepG2, MCF7 using PSMB6 Rabbit pAb at 1:1000. Secondary antibody: HRP Goat Anti-Rabbit IgG (H+L) at 1:5000. Lysates/proteins: 30ug per lane. Blocking buffer: 5% non-fat dry milk in TBST. Detection: ECL Enhanced Kit. Exposure time: 120s.

实验步骤

访问官网浏览详情: www.ablybio.cn