

# BMPR2 Rabbit pAb

货号: **AYP11934**

## 产品信息

反应	Human,Mouse,Rat
宿主	Rabbit
克隆性	Polyclonal
预测反应	<b>WB:</b> Rattus norvegicus , Homo sapiens <b>IF:</b> Homo sapiens
应用	<a href="#">WB</a> <a href="#">IF/ICC</a>
推荐浓度	<b>WB:</b> 1:500 - 1:1000 <b>IF/ICC:</b> 1:50 - 1:200
理论分子量	59kDa/115kDa
实测分子量	100KDa
形式	Liquid
保存条件	Store at -20°C. Avoid freeze / thaw cycles. Buffer: PBS with 0.02% sodium azide,50% glycerol,pH7.3.
偶联物	Unconjugated
阳性对照	HeLa,NIH/3T3,PC-12
细胞定位	Cell membrane,Single-pass type I membrane protein
纯化	Affinity purification

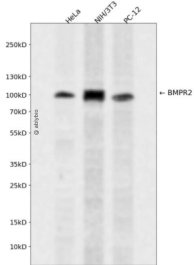
## 抗原信息

抗原信息	Recombinant fusion protein containing a sequence corresponding to amino acids 27-150 of human BMPR 2 (NP_001195.2).
序列	SQNQERLCAFKDPYQQDLGIGESRISHENGILCSKGSTCYGLWEKSKGDINLVKQGCWSHIGDPQECHYECCVTTTPP SIQNGTYRFCCSTDLNCNVNFTENFPPDTPPLSPPHSFNRDET

## 靶点信息

研究背景	This gene encodes a member of the bone morphogenetic protein (BMP) receptor family of transmembrane serine/threonine kinases. The ligands of this receptor are BMPs, which are members of the TGF-beta superfamily. BMPs are involved in endochondral bone formation and embryogenesis. These proteins transduce their signals through the formation of heteromeric complexes of two different types of serine (threonine) kinase receptors: type I receptors of about 50-55 kD and type II receptors of about 70-80 kD. Type II receptors bind ligands in the absence of type I receptors, but they require their respective type I receptors for signaling, whereas type I receptors require their respective type II receptors for ligand binding. Mutations in this gene have been associated with primary pulmonary hypertension, both familial and fenfluramine-associated, and with pulmonary venoocclusive disease.
基因ID	659
基因名	BMPR2
Swiss	Q13873
别名	BMPR2;BMPR-II;BMPR3;BMR2;BRK-3;POVD1;PPH1;T-ALK

## 产品验证



Western blot analysis of BMPR2 expressed in HeLa,NIH/3T3,PC-12 using BMPR2 Rabbit pAb at 1:1000. Secondary antibody: HRP Goat Anti-Rabbit IgG (H+L) at 1:5000. Lysates/proteins: 30ug per lane. Blocking buffer: 5% non-fat dry milk in TBST. Detection: ECL Enhanced Kit. Exposure time: 120s.

## 实验步骤

访问官网浏览详情: [www.ablybio.cn](http://www.ablybio.cn)