

IL1R1 Rabbit pAb

货号: **AYP11930**

产品信息

反应	Human,Mouse,Rat
宿主	Rabbit
克隆性	Polyclonal
预测反应	IHC: Homo sapiens WB: Rattus norvegicus , Sus scrofa
应用	WB
推荐浓度	WB: 1:500 - 1:1000
理论分子量	65kDa
实测分子量	80KDa
形式	Liquid
保存条件	Store at -20°C. Avoid freeze / thaw cycles. Buffer: PBS with 0.02% sodium azide,50% glycerol,pH7.3.
偶联物	Unconjugated
阳性对照	Mouse liver
细胞定位	Cell membrane,Membrane,Secreted,Single-pass type I membrane protein
纯化	Affinity purification

抗原信息

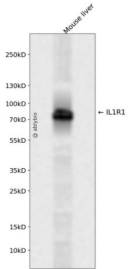
抗原信息	A synthetic peptide corresponding to a sequence within amino acids 1-100 of human IL1R1 (NP_000868.1).
序列	MKVLRLRICFIALLISSLEADKCKEREKIIIVSSANEIDVRPCPLNPNEHKGTITWYKDDSKTPVSTEQASRIHQHKEKLWFPVAKVEDSGHYICVVRN

靶点信息

研究背景	This gene encodes a cytokine receptor that belongs to the interleukin-1 receptor family. The encoded protein is a receptor for interleukin-1 alpha, interleukin-1 beta, and interleukin-1 receptor antagonist. It is an important mediator involved in many cytokine-induced immune and inflammatory responses. This gene is located in a cluster of related cytokine receptor genes on chromosome 2q12.
基因ID	3554

基因名	IL1R1
Swiss	P14778
别名	IL1R1;CD121A;D2S1473;IL-1R-alpha;IL1R;IL1RA;P80

产品验证



Western blot analysis of IL1R1 expressed in Mouse liver using IL1R1 Rabbit pAb at 1:1000. Secondary anti body: HRP Goat Anti-Rabbit IgG (H+L) at 1:5000. Lysates/proteins: 30ug per lane. Blocking buffer: 5% no n-fat dry milk in TBST. Detection: ECL Enhanced Kit. Exposure time: 120s.

实验步骤

访问官网浏览详情: www.ablybio.cn