

PLZF Rabbit pAb

货号: **AYP11925**

产品信息

反应	Human,Mouse,Rat
宿主	Rabbit
克隆性	Polyclonal
预测反应	IF: Mus musculus IHC: Mus musculus
应用	WB IHC
推荐浓度	WB: 1:1000 - 1:5000 IHC: 1:50 - 1:200
理论分子量	61kDa/74kDa
实测分子量	80KDa
形式	Liquid
保存条件	Store at -20°C. Avoid freeze / thaw cycles. Buffer: PBS with 0.01% thiomersal,50% glycerol,pH7.3.
偶联物	Unconjugated
阳性对照	Mouse heart,Rat heart
细胞定位	Nucleus
纯化	Affinity purification

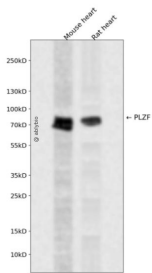
抗原信息

抗原信息	Recombinant fusion protein containing a sequence corresponding to amino acids 177-430 of human PLZF (NP_005997.2).
序列	PGPMVDQSPSVSTSFGLSAMSPTKAAVDSLMTIGQSLLQGTLPAGPEEPTLAGGGRHPGVAEVKTEMMQVDEVPSQ DSPGAAESSISGGMGDKVEERGKEGPGTPTRSSVITSARELHYGREESAEQVPPAEAGQAPTGRPEHPAPPPEKHLGIYS VLPNHKADAVLSMPSSVTSGLHVQPALAVSMDFSTYGGLLPQGGFIQRELFKLGELAVGMKSESRTIGEQCVCVGVLPD NEAVEQHRKLSHGMK

靶点信息

研究背景	This gene is a member of the Krueppel C2H2-type zinc-finger protein family and encodes a zinc finger transcription factor that contains nine Kruppel-type zinc finger domains at the carboxyl terminus. This protein is located in the nucleus, is involved in cell cycle progression, and interacts with a histone deacetylase. Specific instances of aberrant gene rearrangement at this locus have been associated with acute promyelocytic leukemia (APL). Alternate transcriptional splice variants have been characterized.
基因ID	7704
基因名	ZBTB16
Swiss	Q05516
别名	ZBTB16;PLZF;ZNF145

产品验证



Western blot analysis of PLZF expressed in Mouse heart,Rat heart using PLZF Rabbit pAb at 1:1000. Secondary antibody: HRP Goat Anti-Rabbit IgG (H+L) at 1:5000. Lysates/proteins: 30ug per lane. Blocking buffer: 5% non-fat dry milk in TBST. Detection: ECL Enhanced Kit. Exposure time: 120s.

实验步骤

访问官网浏览详情: www.ablybio.cn