

# Cystathionase/CTH Rabbit pAb

货号: **AYP11922**

## 产品信息

反应	Human,Mouse,Rat
宿主	Rabbit
克隆性	Polyclonal
预测反应	<b>WB:</b> Homo sapiens , Mus musculus
应用	<a href="#">WB</a> <a href="#">IF/ICC</a> <a href="#">IP</a>
推荐浓度	<b>WB:</b> 1:100 - 1:500 <b>IF/ICC:</b> 1:50 - 1:200 <b>IP:</b> 1:100 - 1:500
理论分子量	39kDa/41kDa/44kDa
实测分子量	45KDa
形式	Liquid
保存条件	Store at -20°C. Avoid freeze / thaw cycles. Buffer: PBS with 0.05% proclin300,50% glycerol,pH7.3.
偶联物	Unconjugated
阳性对照	K-562,Mouse liver,Mouse kidney,Rat liver,Rat kidney
细胞定位	Cytoplasm
纯化	Affinity purification

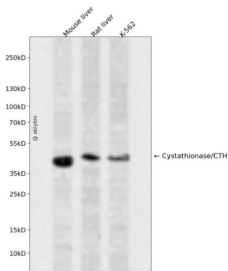
## 抗原信息

抗原信息	Recombinant fusion protein containing a sequence corresponding to amino acids 1-405 of human Cystathionase/Cystathionase/CTH (NP_001893.2).
序列	MQEKDASSQGFLPHFQHFATQAIHVGQDPEQWTSRAVVPPISLSTTFKQGAPGQHSQFEYSRSGNPTRNCLEKAVAALD GAKYCLAFASGLAATVTITHLLKAGDQIICMDDVYGGTNRFRQVASEFGLKISFVDCSKIKLLEAAITPETKLVWIETPTNPT QKVIDIEGCAHIVHKHGDIIILVVDNTFMSPYFQRPLALGADISMYSATKYMNGHSDVVMGLVSVNCESLHNRLRFLQNSLG AVPSPIDCYLCNRGLKTLHVRMEKHFKNGMAVAQFLESNPWVEKVIYPGLPSHPQHELVKRQCTGCTGMVTFYIKGTLQH AEIFLKNLKLFTLAESLGGFESLAELPAIMTHASVLKNDRDVLGISDTLIRLSVGLLEDEEDLLEDLDQALKAHPPSGSHS

## 靶点信息

研究背景	This gene encodes a cytoplasmic enzyme in the trans-sulfuration pathway that converts cystathione derived from methionine into cysteine. Glutathione synthesis in the liver is dependent upon the availability of cysteine. Mutations in this gene cause cystathioninuria. Alternative splicing of this gene results in three transcript variants encoding different isoforms.
基因ID	1491
基因名	CTH
Swiss	P32929
别名	CTH

## 产品验证



Western blot analysis of Cystathionase/CTH expressed in Mouse liver, Rat liver, K-562 using Cystathionase/CTH Rabbit pAb at 1:1000. Secondary antibody: HRP Goat Anti-Rabbit IgG (H+L) at 1:5000. Lysates/proteins: 30ug per lane. Blocking buffer: 5% non-fat dry milk in TBST. Detection: ECL Enhanced Kit. Exposure time: 120s.

## 实验步骤

访问官网浏览详情: [www.ablybio.cn](http://www.ablybio.cn)