

SOAT1 Rabbit pAb

货号: **AYP11919**

产品信息

反应	Human,Mouse,Rat
宿主	Rabbit
克隆性	Polyclonal
预测反应	WB: Mus musculus IHC: Homo sapiens IF: mice
应用	WB IF/ICC
推荐浓度	WB: 1:500 - 1:2000 IF/ICC: 1:50 - 1:200
理论分子量	57kDa/58kDa/64kDa
实测分子量	55kDa
形式	Liquid
保存条件	Store at -20°C. Avoid freeze / thaw cycles. Buffer: PBS with 0.02% sodium azide,50% glycerol,pH7.3.
偶联物	Unconjugated
阳性对照	H460,HeLa,SW480,Mouse stomach,Mouse liver,Rat liver,Rat stomach
细胞定位	Endoplasmic reticulum membrane,Multi-pass membrane protein
纯化	Affinity purification

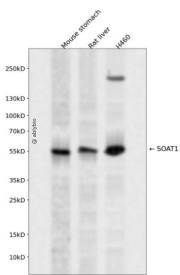
抗原信息

抗原信息	Recombinant fusion protein containing a sequence corresponding to amino acids 1-130 of human SOAT1 (NP_003092.4).
序列	MVGEEKMSLRNRLSKSRENPEEDEDQRNPAKESLETPSNGRIDIKQLIAKKIKLTAEAEELKPFMKEVGSFHDDFVTNLIK SASLDNNGGCALTTFSVLEGEKNNHRAKDLRAPPEQGIARRSLLD

靶点信息

研究背景	The protein encoded by this gene belongs to the acyltransferase family. It is located in the endoplasmic reticulum, and catalyzes the formation of fatty acid-cholesterol esters. This gene has been implicated in the formation of beta-amyloid and atherosclerotic plaques by controlling the equilibrium between free cholesterol and cytoplasmic cholesteryl esters. Alternatively spliced transcript variants have been found for this gene.
基因ID	6646
基因名	SOAT1
Swiss	P35610
别名	SOAT1;ACACT;ACAT;ACAT-1;ACAT1;SOAT;STAT

产品验证



Western blot analysis of SOAT1 expressed in Mouse stomach, Rat liver, H460 using SOAT1 Rabbit pAb at 1:1000. Secondary antibody: HRP Goat Anti-Rabbit IgG (H+L) at 1:5000. Lysates/proteins: 30ug per lane. Blocking buffer: 5% non-fat dry milk in TBST. Detection: ECL Enhanced Kit. Exposure time: 120s.

实验步骤

访问官网浏览详情: www.ablybio.cn