

RPS2 Rabbit pAb

货号: **AYP11912**

产品信息

反应	Human,Mouse,Rat
宿主	Rabbit
克隆性	Polyclonal
预测反应	WB: Homo sapiens , Mus musculus , Eriocheir sinensis H.Milne-Edwards
应用	WB IHC
推荐浓度	WB: 1:500 - 1:2000 IHC: 1:50 - 1:200
理论分子量	31kDa
实测分子量	38kDa
形式	Liquid
保存条件	Store at -20°C. Avoid freeze / thaw cycles. Buffer: PBS with 0.02% sodium azide,50% glycerol,pH7.3.
偶联物	Unconjugated
阳性对照	U-87MG,U-251MG,MCF7,HeLa
细胞定位	cytoplasm,cytosol,cytosolic ribosome,extracellular exosome,focal adhesion,nucleoplasm,nucleus
纯化	Affinity purification

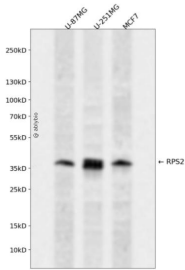
抗原信息

抗原信息	Recombinant fusion protein containing a sequence corresponding to amino acids 1-293 of human RPS2 (NP_002943.2).
序列	MADDAGAAGGPGGGPGMGNRGGFRGGFGSGIRGRGRGRGRGRGRGRGARGGKAEDKEWMPVTKLGRVLKDMK IKSLEEIYFLSPIKESEIIDFFLGASLKDEVLKIMPVQKQTRAGQRTRFKAFVAIGDYNGHVGLGVKCSKEVATAIRGAILAKL SIVPVRRGYWGNKIGKPHTVPCKVTGRCGSVLVRLIPAPRGTGIVSAPVPPKLLMMAGIDDCYTSARGCTATLGNFAKATF DAISKTYSYLTDLWKETVFTKSPYQEFTHLVKTHTRVSVQRTQAPAVATT

靶点信息

研究背景	Ribosomes, the organelles that catalyze protein synthesis, consist of a small 40S subunit and a large 60S subunit. Together these subunits are composed of 4 RNA species and approximately 80 structurally distinct proteins. This gene encodes a ribosomal protein that is a component of the 40S subunit. The protein belongs to the S5P family of ribosomal proteins. It is located in the cytoplasm. This gene shares sequence similarity with mouse LLRep3. It is co-transcribed with the small nucleolar RNA gene U64, which is located in its third intron. As is typical for genes encoding ribosomal proteins, there are multiple processed pseudogenes of this gene dispersed through the genome.
基因ID	6187
基因名	RPS2
Swiss	P15880
别名	RPS2;LLREP3;S2

产品验证



Western blot analysis of RPS2 expressed in U-87MG,U-251MG,MCF7 using RPS2 Rabbit pAb at 1:1000. Secondary antibody: HRP Goat Anti-Rabbit IgG (H+L) at 1:5000. Lysates/proteins: 30ug per lane. Blocking buffer: 5% non-fat dry milk in TBST. Detection: ECL Enhanced Kit. Exposure time: 120s.

实验步骤

访问官网浏览详情: www.ablybio.cn