

COPB2 Rabbit pAb

货号: **AYP11905**

产品信息

反应	Human,Mouse,Rat
宿主	Rabbit
克隆性	Polyclonal
预测反应	WB: Homo sapiens IF: Homo sapiens
应用	WB IHC IF/ICC
推荐浓度	WB: 1:100 - 1:500 IHC: 1:50 - 1:200 IF/ICC: 1:50 - 1:200
理论分子量	99kDa/102kDa
实测分子量	102KDa
形式	Liquid
保存条件	Store at -20°C. Avoid freeze / thaw cycles. Buffer: PBS with 0.05% proclin300,50% glycerol,pH7.3.
偶联物	Unconjugated
阳性对照	SK-BR-3,Mouse liver,Rat liver
细胞定位	COPI-coated vesicle membrane,Cytoplasm,Cytoplasmic side,Cytoplasmic vesicle,Golgi apparatus membrane,Peripheral membrane protein,cytosol
纯化	Affinity purification

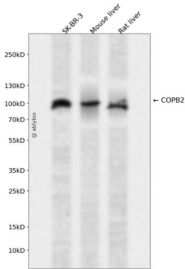
抗原信息

抗原信息	Recombinant fusion protein containing a sequence corresponding to amino acids 657-906 of human COPB2 (NP_004757.1).
序列	AYQLAVEAESEQKWKQLAELAISKQFGLAQECLHHAQDYGGLLLLATASGNANMVNKLAEGAERDGNVAFMSYFLQ GKVDACLELLIRTGRLPEAAFLARTYLPQSQSRVVKLWRENLSKVNQKAAESLADPTEYENLFPGLKEAFVVEEWKETHA DLWPAKQYPLVTPNEERNVMEEGKDFQPSRSTAQQELDGKSPVIVASHTANKEEKSLLELEVLDLNLELEDIDTTDI NLDEDILDD

靶点信息

研究背景	The Golgi coatomer complex (see MIM 601924) constitutes the coat of nonclathrin-coated vesicles and is essential for Golgi budding and vesicular trafficking. It consists of 7 protein subunits, including COPB2.[supplied by OMIM, Jul 2002]
基因ID	9276
基因名	COPB2
Swiss	P35606
别名	COPB2;beta-COP

产品验证



Western blot analysis of COPB2 expressed in SK-BR-3, Mouse liver, Rat liver using COPB2 Rabbit pAb at 1:1000. Secondary antibody: HRP Goat Anti-Rabbit IgG (H+L) at 1:5000. Lysates/proteins: 30ug per lane. Blocking buffer: 5% non-fat dry milk in TBST. Detection: ECL Enhanced Kit. Exposure time: 120s.

实验步骤

访问官网浏览详情: www.ablybio.cn