

Sonic Hedgehog (Shh) Rabbit pAb

货号: **AYP11890**

产品信息

反应	Human,Mouse,Rat
宿主	Rabbit
克隆性	Polyclonal
预测反应	WB: Rattus norvegicus , Homo sapiens
应用	WB IHC IF/ICC
推荐浓度	WB: 1:500 - 1:1000 IHC: 1:50 - 1:100 IF/ICC: 1:50 - 1:200
理论分子量	49kDa
实测分子量	19KDa
形式	Liquid
保存条件	Store at -20°C. Avoid freeze / thaw cycles. Buffer: PBS with 0.05% proclin300,50% glycerol,pH7.3.
偶联物	Unconjugated
阳性对照	HeLa,HepG2,Rat lung
细胞定位	Cell membrane,Lipid-anchor,Secreted,extracellular space
纯化	Affinity purification

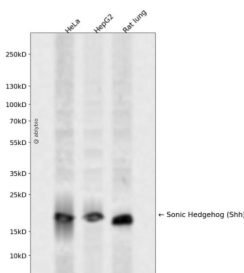
抗原信息

抗原信息	A synthetic peptide corresponding to a sequence within amino acids 200-300 of human Sonic Hedgehog (Shh) (NP_000184.1).
序列	PGSATVHLEQGGTKLVKDLSPGDRVLAADDQGRLLYSDFLTLDRDDGAKKVFYVIETREPRERLLLTAHLLFVAPHNDS ATGEPEASSSGPPSGGALG

靶点信息

研究背景	This gene encodes a protein that is instrumental in patterning the early embryo. It has been implicated as the key inductive signal in patterning of the ventral neural tube, the anterior-posterior limb axis, and the ventral somites. Of three human proteins showing sequence and functional similarity to the sonic hedgehog protein of <i>Drosophila</i> , this protein is the most similar. The protein is made as a precursor that is autocatalytically cleaved; the N-terminal portion is soluble and contains the signalling activity while the C-terminal portion is involved in precursor processing. More importantly, the C-terminal product covalently attaches a cholesterol moiety to the N-terminal product, restricting the N-terminal product to the cell surface and preventing it from freely diffusing throughout the developing embryo. Defects in this protein or in its signalling pathway are a cause of holoprosencephaly (HPE). It is also thought that mutations in this gene or in its signalling pathway may be responsible for VACTERL syndrome. Additionally, mutations in a long range enhancer located approximately 1 megabase upstream of this gene disrupt limb patterning and can result in preaxial polydactyly.
基因ID	6469
基因名	SHH
Swiss	Q15465
别名	SHH;HHG1;HLP3;HPE3;MCOPCB5;SMMCI;TPT;TPTPS

产品验证



Western blot analysis of Sonic Hedgehog (Shh) expressed in HeLa, HepG2, Rat lung using Sonic Hedgehog (Shh) Rabbit pAb at 1:1000. Secondary antibody: HRP Goat Anti-Rabbit IgG (H+L) at 1:5000. Lysates/proteins: 30ug per lane. Blocking buffer: 5% non-fat dry milk in TBST. Detection: ECL Enhanced Kit. Exposure time: 120s.

实验步骤

访问官网浏览详情: www.ablybio.cn