

— ABLYBIO, Help Your Research



GLUT3/SLC2A3 Rabbit pAb

货号: **AYP11888**

产品信息

反应	Human,Mouse,Rat
宿主	Rabbit
克隆性	Polyclonal
预测反应	WB: Gallus gallus , Homo sapiens
应用	WB IHC
推荐浓度	WB: 1:100 - 1:500 IHC: 1:50 - 1:200
理论分子量	53kDa
实测分子量	48-60KDa
形式	Liquid
保存条件	Store at -20°C. Avoid freeze / thaw cycles. Buffer: PBS with 0.05% proclin300,50% glycerol,pH7.3.
偶联物	Unconjugated
阳性对照	HepG2
细胞定位	Cell membrane,Multi-pass membrane protein
纯化	Affinity purification

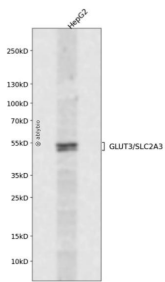
抗原信息

抗原信息	Recombinant fusion protein containing a sequence corresponding to amino acids 207-281 of human GLUT 3/SLC2A3 (NP_008862.1).
------	---

靶点信息

研究背景	Facilitative glucose transporter that can also mediate the uptake of various other monosaccharides across the cell membrane. Mediates the uptake of glucose, 2-deoxyglucose, galactose, mannose, xylose and fructose, and probably also dehydroascorbate. Does not mediate fructose transport.
基因ID	6515
基因名	SLC2A3
Swiss	P11169 (https://www.uniprot.org/uniprotkb/P11169/entry)
别名	SLC2A3, GLUT3, GLUT3/SLC2A3 Rabbit pAb, Glucose transporter type 3, brain

产品验证



Western blot analysis of GLUT3/SLC2A3 expressed in HepG2 using GLUT3/SLC2A3 Rabbit pAb at 1:1000. Secondary antibody: HRP Goat Anti-Rabbit IgG (H+L) at 1:5000. Lysates/proteins: 30ug per lane. Blocking buffer: 5% non-fat dry milk in TBST. Detection: ECL Enhanced Kit. Exposure time: 120s.

实验步骤

访问官网浏览详情: www.ablybio.cn (<https://www.ablybio.cn/>www.ablybio.cn)