

Phospho-c-Fos-T232 Rabbit pAb

货号: **AYP11877**

产品信息

反应	Human,Mouse,Rat
宿主	Rabbit
克隆性	Polyclonal
预测反应	WB: Mus musculus , Gallus gallus , Chlorocebus aethiops
应用	WB
推荐浓度	WB: 1:500 - 1:2000
理论分子量	28kDa/36kDa/40kDa
实测分子量	62kDa
形式	Liquid
保存条件	Store at -20°C. Avoid freeze / thaw cycles. Buffer: PBS with 0.02% sodium azide,50% glycerol,pH7.3.
偶联物	Unconjugated
阳性对照	HepG2
细胞定位	Cytoplasm,Endoplasmic reticulum,Nucleus,cytosol
纯化	Affinity purification

抗原信息

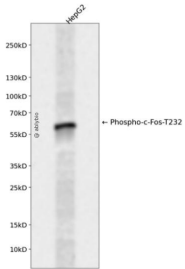
抗原信息	A synthetic phosphorylated peptide around T232 of human c-Fos (NP_005243.1).
序列	VATPE

靶点信息

研究背景	The Fos gene family consists of 4 members: FOS, FOSB, FOSL1, and FOSL2. These genes encode leucine zipper proteins that can dimerize with proteins of the JUN family, thereby forming the transcription factor complex AP-1. As such, the FOS proteins have been implicated as regulators of cell proliferation, differentiation, and transformation. In some cases, expression of the FOS gene has also been associated with apoptotic cell death.
基因ID	2353

基因名	FOS
Swiss	P01100
别名	FOS;AP-1;C-FOS;p55;c-Fos

产品验证



Western blot analysis of Phospho-c-Fos-T232 expressed in HepG2 using Phospho-c-Fos-T232 Rabbit pAb at 1:1000. Secondary antibody: HRP Goat Anti-Rabbit IgG (H+L) at 1:5000. Lysates/proteins: 30ug per lane. Blocking buffer: 5% non-fat dry milk in TBST. Detection: ECL Enhanced Kit. Exposure time: 120s.

实验步骤

访问官网浏览详情: www.ablybio.cn