

Phospho-MEK1-S298 Rabbit pAb

货号: **AYP11875**

产品信息

反应	Human,Mouse,Rat
宿主	Rabbit
克隆性	Polyclonal
预测反应	WB: Homo sapiens
应用	WB IP
推荐浓度	WB: 1:500 - 1:2000 IP: 1:50 - 1:100
理论分子量	40kDa/43kDa
实测分子量	43kDa
形式	Liquid
保存条件	Store at -20°C. Avoid freeze / thaw cycles. Buffer: PBS with 0.02% sodium azide,50% glycerol,pH7.3.
偶联物	Unconjugated
阳性对照	HeLa,C2C12,C6
细胞定位	Cytoplasm,Membrane,Nucleus,Peripheral membrane protein,centrosome,cytoskeleton,microtubule organizing center,spindle pole body
纯化	Affinity purification

抗原信息

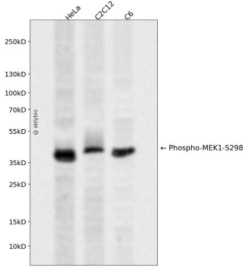
抗原信息	A synthetic phosphorylated peptide around S298 of human MEK1 (NP_002746.1).
序列	PLSSY

靶点信息

研究背景	The protein encoded by this gene is a member of the dual specificity protein kinase family, which acts as a mitogen-activated protein (MAP) kinase kinase. MAP kinases, also known as extracellular signal-regulated kinases (ERKs), act as an integration point for multiple biochemical signals. This protein kinase lies upstream of MAP kinases and stimulates the enzymatic activity of MAP kinases upon wide variety of extracellular and intracellular signals. As an essential component of MAP kinase signal transduction pathway, this kinase is involved in many cellular processes such as proliferation, differentiation, transcription regulation and development.
------	--

基因ID	5604
基因名	MAP2K1
Swiss	Q02750
别名	CFC3;MAPKK1;MEK1;MKK1;PRKMK1;MAP2K1

产品验证



Western blot analysis of Phospho-MEK1-S298 expressed in HeLa,C2C12,C6 using Phospho-MEK1-S298 Rabbit pAb at 1:1000. Secondary antibody: HRP Goat Anti-Rabbit IgG (H+L) at 1:5000. Lysate s/proteins: 30ug per lane. Blocking buffer: 5% non-fat dry milk in TBST. Detection: ECL Enhanced Kit. Exposure time: 120s.

实验步骤

访问官网浏览详情: www.ablybio.cn