

Calmodulin 1/2/3 Rabbit pAb

货号: **AYP11868**

产品信息

反应	Human,Mouse,Rat
宿主	Rabbit
克隆性	Polyclonal
预测反应	WB: Rattus norvegicus , Mus musculus
应用	WB
推荐浓度	WB: 1:500 - 1:1000
理论分子量	16kDa
实测分子量	17KDa
形式	Liquid
保存条件	Store at -20°C. Avoid freeze / thaw cycles. Buffer: PBS with 0.05% proclin300,50% glycerol,pH7.3.
偶联物	Unconjugated
阳性对照	NCI-H460,U-251MG,Mouse lung,Mouse brain,Rat lung
细胞定位	Cytoplasm,cytoskeleton,spindle,spindle pole
纯化	Affinity purification

抗原信息

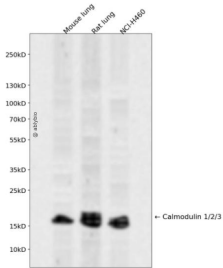
抗原信息	A synthetic peptide corresponding to a sequence within amino acids 70-149 of human Calmodulin 1/2/3 (NP_008819.1).
序列	LTMMARKMKDTSDEEEIREAFRVFDKDGNGYISAAELRHVMTNLGEKLTDEEVDEMIREADIDGGQVNYEEFVQMMTK

靶点信息

研究背景	This gene encodes a member of the EF-hand calcium-binding protein family. It is one of three genes which encode an identical calcium binding protein which is one of the four subunits of phosphorylase kinase. Two pseudogenes have been identified on chromosome 7 and X. Multiple transcript variants encoding different isoforms have been found for this gene.
基因ID	801,805,808

基因名	
Swiss	P0DP23,P0DP24,P0DP25
别名	CALM1;CALML2;CAMI;CPVT4;DD132;LQT14;PHKD;caM

产品验证



Western blot analysis of Calmodulin 1/2/3 expressed in Mouse lung,Rat lung,NCI-H460 using Calmodulin 1/2/3 Rabbit pAb at 1:1000. Secondary antibody: HRP Goat Anti-Rabbit IgG (H+L) at 1:5000. Lysates/proteins: 30ug per lane. Blocking buffer: 5% non-fat dry milk in TBST. Detection: ECL Enhanced Kit. Exposure time: 120s.

实验步骤

访问官网浏览详情: www.ablybio.cn