

— ABLYBIO, Help Your Research



Phospho-IGF1R-Y1161 Rabbit pAb

货号: **AYP11849**

产品信息

反应	Human,Mouse,Rat
宿主	Rabbit
克隆性	Polyclonal
预测反应	WB: Mus musculus IF: Mus musculus
应用	WB
推荐浓度	WB: 1:500 - 1:2000
理论分子量	154kDa
实测分子量	95kDa
形式	Liquid
保存条件	Store at -20°C. Avoid freeze / thaw cycles. Buffer: PBS with 0.01% thiomersal,50% glycerol,pH7.3.
偶联物	Unconjugated
阳性对照	293
细胞定位	Cell membrane,Single-pass type I membrane protein
纯化	Affinity purification

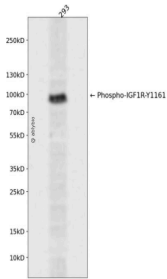
抗原信息

抗原信息	A synthetic phosphorylated peptide around Y1161 of human IGF1R (NP_000866.1).
------	---

靶点信息

研究背景	This receptor binds insulin-like growth factor with a high affinity. It has tyrosine kinase activity. The insulin-like growth factor I receptor plays a critical role in transformation events. Cleavage of the precursor gene rates alpha and beta subunits. It is highly overexpressed in most malignant tissues where it functions as an anti-apoptotic agent by enhancing cell survival. Alternatively spliced transcript variants encoding distinct isoforms have been found for this gene.
基因ID	3480
基因名	IGF1R
Swiss	P08069 (https://www.uniprot.org/uniprotkb/P08069/entry)
别名	IGF1R,CD221,IGFIR,IGFR,JTK13,Phospho-IGF1R-Y1161 Rabbit pAb,Insulin-like growth factor I receptor

产品验证



Western blot analysis of Phospho-IGF1R-Y1161 expressed in 293 using Phospho-IGF1R-Y1161 Rabbit pAb at 1:1000. Secondary antibody: HRP Goat Anti-Rabbit IgG (H+L) at 1:5000. Lysates/proteins: 30ug per lane. Blocking buffer: 5% non-fat dry milk in TBST. Detection: ECL Enhanced Kit. Exposure time: 120s.

实验步骤

访问官网浏览详情: www.ablybio.cn (<https://www.ablybio.cn/www.ablybio.cn>)