

Phospho-S6 Ribosomal Protein (RPS6)-S240/244 Rabbit pAb

货号: AYP11847

产品信息

反应	Human,Mouse,Rat
宿主	Rabbit
克隆性	Polyclonal
预测反应	WB: Mus musculus , Homo sapiens
应用	WB IHC IP
推荐浓度	WB: 1:500 - 1:2000 IHC: 1:50 - 1:200 IP: 1:50 - 1:100
理论分子量	28kDa
实测分子量	36kDa
形式	Liquid
保存条件	Store at -20°C. Avoid freeze / thaw cycles. Buffer: PBS with 0.02% sodium azide,50% glycerol,pH7.3.
偶联物	Unconjugated
阳性对照	HeLa,NIH/3T3
细胞定位	cytoplasm,cytoplasmic ribonucleoprotein granule,cytosol,cytosolic ribosome,endoplasmic reticulum,nucleolus,nucleoplasm,nucleus,perinuclear region of cytoplasm
纯化	Affinity purification

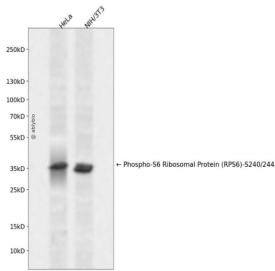
抗原信息

抗原信息	A synthetic phosphorylated peptide around S240 & S244 of human RPS6 (NP_001001.2).
序列	STSKS

靶点信息

研究背景	Ribosomes, the organelles that catalyze protein synthesis, consist of a small 40S subunit and a large 60S subunit. Together these subunits are composed of 4 RNA species and approximately 80 structurally distinct proteins. This gene encodes a cytoplasmic ribosomal protein that is a component of the 40S subunit. The protein belongs to the S6E family of ribosomal proteins. It is the major substrate of protein kinases in the ribosome, with subsets of five C-terminal serine residues phosphorylated by different protein kinases. Phosphorylation is induced by a wide range of stimuli, including growth factors, tumor-promoting agents, and mitogens. Dephosphorylation occurs at growth arrest. The protein may contribute to the control of cell growth and proliferation through the selective translation of particular classes of mRNA. As is typical for genes encoding ribosomal proteins, there are multiple processed pseudogenes of this gene dispersed throughout the genome.
基因ID	6194
基因名	RPS6
Swiss	P62753
别名	RPS6;S6;RPS6

产品验证



Western blot analysis of Phospho-S6 Ribosomal Protein (RPS6)-S240/244 expressed in HeLa,NIH/3T3 using Phospho-S6 Ribosomal Protein (RPS6)-S240/244 Rabbit pAb at 1:1000. Secondary antibody: HRP Goat Anti-Rabbit IgG (H+L) at 1:5000. Lysates/proteins: 30ug per lane. Blocking buffer: 5% non-fat dry milk in TBST. Detection: ECL Enhanced Kit. Exposure time: 120s.

实验步骤

访问官网浏览详情: www.ablybio.cn