

Neurofilament L Rabbit pAb

货号: **AYP11842**

产品信息

| | |
|-------|--|
| 反应 | Human,Mouse,Rat |
| 宿主 | Rabbit |
| 克隆性 | Polyclonal |
| 预测反应 | IF: Mouse tibialis anterior muscle , Macaca mulatta , Homo sapiens |
| 应用 | WB IHC IF/ICC |
| 推荐浓度 | WB: 1:500 - 1:1000 IHC: 1:50 - 1:200 IF/ICC: 1:50 - 1:200 |
| 理论分子量 | 61kDa |
| 实测分子量 | 70KDa |
| 形式 | Liquid |
| 保存条件 | Store at -20°C. Avoid freeze / thaw cycles. Buffer: PBS with 0.01% thiomersal,50% glycerol,pH7.3. |
| 偶联物 | Unconjugated |
| 阳性对照 | 293T,SH-SY5Y,U-251MG,Mouse brain,Rat brain |
| 细胞定位 | axon,axon cytoplasm,cholinergic synapse,cytoplasm,cytosol,growth cone,neurofilament,neuromuscular junction,postsynaptic intermediate filament cytoskeleton,presynaptic intermediate filament cytoskeleton,S chaffer collateral - CA1 synapse |
| 纯化 | Affinity purification |

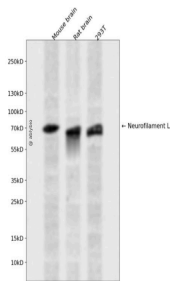
抗原信息

| | |
|------|--|
| 抗原信息 | Recombinant fusion protein containing a sequence corresponding to amino acids 60-250 of human Neurofilament L (NP_006149.2). |
|------|--|

靶点信息

| | |
|-------|---|
| 研究背景 | Neurofilaments are type IV intermediate filament heteropolymers composed of light, medium, and heavy chains. Neurofilaments comprise the axoskeleton and they functionally maintain the neuronal caliber. They may also play a role in intracellular transport to axons and dendrites. This gene encodes the light chain neurofilament protein. Mutations in this gene cause Charcot-Marie-Tooth disease types 1F (CMT1F) and 2E (CMT2E), disorders of the peripheral nervous system that are characterized by distinct neuropathies. A pseudogene has been identified on chromosome Y. |
| 基因ID | 4747 |
| 基因名 | NEFL |
| Swiss | P07196 (https://www.uniprot.org/uniprotkb/P07196/entry) |
| 别名 | NEFL,CMT1F,CMT2E,NF-L,NF68,NFL,PPP1R110,Neurofilament L Rabbit pAb,68 kDa neurofilament protein, Neurofilament triplet L protein |

产品验证



Western blot analysis of Neurofilament L expressed in Mouse brain, Rat brain, 293T using Neurofilament L Rabbit pAb at 1:1000. Secondary antibody: HRP Goat Anti-Rabbit IgG (H+L) at 1:5000. Lysates/proteins: 3 0ug per lane. Blocking buffer: 5% non-fat dry milk in TBST. Detection: ECL Enhanced Kit. Exposure time: 1 20s.

实验步骤

访问官网浏览详情: www.ablybio.cn (<https://www.ablybio.cn/www.ablybio.cn>)