

— ABLYBIO, Help Your Research



PHGDH Rabbit pAb

货号: **AYP11838**

产品信息

反应	Human,Mouse,Rat
宿主	Rabbit
克隆性	Polyclonal
预测反应	WB: Homo sapiens , Mus musculus Neutralization assays: Bombyx mori Linnaeus
应用	WB IF/ICC IP
推荐浓度	WB: 1:500 - 1:1000 IF/ICC: 1:100 - 1:500 IP: 1:500 - 1:1000
理论分子量	56kDa
实测分子量	57KDa
形式	Liquid
保存条件	Store at -20°C. Avoid freeze / thaw cycles. Buffer: PBS with 0.01% thiomersal,50% glycerol,pH7.3.
偶联物	Unconjugated
阳性对照	HeLa,HT-29,MCF7,NIH/3T3,C6,Mouse brain
细胞定位	cytosol,extracellular exosome
纯化	Affinity purification

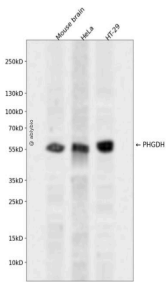
抗原信息

抗原信息	Recombinant fusion protein containing a sequence corresponding to amino acids 264-533 of human PHGDH (NP_006614.2).
------	---

靶点信息

研究背景	This gene encodes the enzyme which is involved in the early steps of L-serine synthesis in animal cells. L-serine is required for D-serine and other amino acid synthesis. The enzyme requires NAD/NADH as a cofactor and forms homotetramers for activity. Mutations in this gene have been found in a family with congenital microcephaly, psychomotor retardation and other symptoms. Multiple alternatively spliced transcript variants have been found, however the full-length nature of most are not known.
基因ID	26227
基因名	PHGDH
Swiss	O43175 (https://www.uniprot.org/uniprotkb/O43175/entry)
别名	PHGDH,3-PGDH,3PGDH,HEL-S-113,NLS,NLS1,PDG,PGAD,PGD,PGDH,PHGDHD,SERA,PHGDH Rabbit pAb,2-oxoglutarate reductase,Malate dehydrogenase,PGDH3

产品验证



Western blot analysis of PHGDH expressed in Mouse brain, HeLa, HT-29 using PHGDH Rabbit pAb at 1:1000. Secondary antibody: HRP Goat Anti-Rabbit IgG (H+L) at 1:5000. Lysates/proteins: 30ug per lane. Blocking buffer: 5% non-fat dry milk in TBST. Detection: ECL Enhanced Kit. Exposure time: 120s.

实验步骤

访问官网浏览详情: www.ablybio.cn (<https://www.ablybio.cn/www.ablybio.cn>)