

CD133 Rabbit pAb

货号: **AYP11835**

产品信息

反应	Human,Mouse,Rat
宿主	Rabbit
克隆性	Polyclonal
预测反应	WB: Mouse Monocyte Macrophage Leukemia Cells , Mus musculus IF: Homo sapiens , Rattus norvegicus
应用	WB IF/ICC IP
推荐浓度	WB: 1:500 - 1:1000 IF/ICC: 1:50 - 1:200 IP: 1:500 - 1:1000
理论分子量	92kDa/93kDa/94kDa/96kDa/97kDa
实测分子量	120KDa
形式	Liquid
保存条件	Store at -20°C. Avoid freeze / thaw cycles. Buffer: PBS with 0.01% thiomersal,50% glycerol,pH7.3.
偶联物	Unconjugated
阳性对照	HCT116
细胞定位	Apical cell membrane,Cell projection,Endoplasmic reticulum,Endoplasmic reticulum-Golgi intermediate compartment,Multi-pass membrane protein,cilium,microvillus membrane,photoreceptor outer segment
纯化	Affinity purification

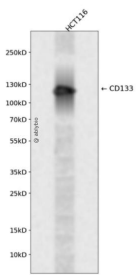
抗原信息

抗原信息	Recombinant fusion protein containing a sequence corresponding to amino acids 179-433 of human CD133 (NP_006008.1).
序列	ANHQVRTRIKRSRKLADSNFKDLRLLNETPEQIKYILAQYNTTKDKAFTDLNSINSVLGGGILDRLRPNIIPVLDEIKSMATAIKETKEALENMNSTLKLHQQSTQLSSSLTSVKTSLSLNDPLCLVHPSSSETCNSIRLSLSQLNSNPELRQLPPVDAELDNVNNVLRDLDGLVQQGYQLNDIPDRVQRQTTTVVAGIKRVLNSIGSDIDNVTQRLPIQDILSAFSVYVNNTESYIHRNLPTLEEYDSY

靶点信息

研究背景	This gene encodes a pentaspan transmembrane glycoprotein. The protein localizes to membrane protrusions and is often expressed on adult stem cells, where it is thought to function in maintaining stem cell properties by suppressing differentiation. Mutations in this gene have been shown to result in retinitis pigmentosa and Stargardt disease. Expression of this gene is also associated with several types of cancer. This gene is expressed from at least five alternative promoters that are expressed in a tissue-dependent manner. Multiple transcript variants encoding different isoforms have been found for this gene.
基因ID	8842
基因名	PROM1
Swiss	O43490
别名	PROM1;AC133;CD133;CORD12;MCDR2;MSTP061;PROML1;RP41;STGD4

产品验证



Western blot analysis of CD133 expressed in HCT116 using CD133 Rabbit pAb at 1:1000. Secondary antibody: HRP Goat Anti-Rabbit IgG (H+L) at 1:5000. Lysates/proteins: 30ug per lane. Blocking buffer: 5% non-fat dry milk in TBST. Detection: ECL Enhanced Kit. Exposure time: 120s.

实验步骤

访问官网浏览详情: www.ablybio.cn