

— ABLYBIO, Help Your Research



CLDN7 Rabbit pAb

货号: **AYP11831**

产品信息

反应	Human,Mouse,Rat
宿主	Rabbit
克隆性	Polyclonal
预测反应	WB: Mouse colon , Homo sapiens , Mus musculus IHC: Mus musculus IF: Mus musculus
应用	WB
推荐浓度	WB: 1:500 - 1:1000
理论分子量	16kDa/22kDa
实测分子量	22KDa
形式	Liquid
保存条件	Store at -20°C. Avoid freeze / thaw cycles. Buffer: PBS with 0.02% sodium azide,50% glycerol,pH7.3.
偶联物	Unconjugated
阳性对照	PC-3,Mouse lung,Rat lung
细胞定位	Cell junction,Cell membrane,Lateral cell membrane,Multi-pass membrane protein,tight junction
纯化	Affinity purification

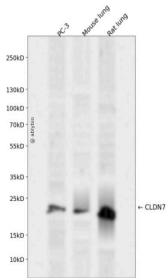
抗原信息

抗原信息	Recombinant fusion protein containing a sequence corresponding to amino acids 29-211 of human CLDN7 (NP_001298.3).
------	--

靶点信息

研究背景	This gene encodes a member of the claudin family. Claudins are integral membrane proteins and components of tight junction strands. Tight junction strands serve as a physical barrier to prevent solutes and water from passing freely through the paracellular space between epithelial or endothelial cell sheets, and also play critical roles in maintaining cell polarity and signal transductions. Differential expression of this gene has been observed in different types of malignancies, including breast cancer, ovarian cancer, hepatocellular carcinomas, urinary tumors, prostate cancer, lung cancer, head and neck cancers, thyroid carcinomas, etc.. Alternatively spliced transcript variants encoding different isoforms have been found.
基因ID	1366
基因名	CLDN7
Swiss	O95471 (https://www.uniprot.org/uniprotkb/O95471/entry)
别名	CLDN7,CEPTRL2,CLDN-7,CPETRL2,Hs.84359,claudin-1,claudin-7,CLDN7 Rabbit pAb

产品验证



Western blot analysis of CLDN7 expressed in PC-3, Mouse lung, Rat lung using CLDN7 Rabbit pAb at 1:1000. Secondary antibody: HRP Goat Anti-Rabbit IgG (H+L) at 1:5000. Lysates/proteins: 30ug per lane. Blocking buffer: 5% non-fat dry milk in TBST. Detection: ECL Enhanced Kit. Exposure time: 120s.

实验步骤

访问官网浏览详情: www.ablybio.cn (<https://www.ablybio.cn/www.ablybio.cn>)