

— ABLYBIO, Help Your Research



DVL1 Rabbit pAb

货号: **AYP11818**

产品信息

反应	Human,Mouse,Rat
宿主	Rabbit
克隆性	Polyclonal
预测反应	WB: 293T , Rattus norvegicus , Capra hircus IP: 293T
应用	WB IHC IF/ICC
推荐浓度	WB: 1:500 - 1:1000 IHC: 1:50 - 1:200 IF/ICC: 1:50 - 1:200
理论分子量	72kDa/75kDa
实测分子量	75KDa
形式	Liquid
保存条件	Store at -20°C. Avoid freeze / thaw cycles. Buffer: PBS with 0.01% thiomersal,50% glycerol,pH7.3.
偶联物	Unconjugated
阳性对照	HeLa,PC-3,293T
细胞定位	Cell membrane,Cytoplasm,Cytoplasmic side,Cytoplasmic vesicle,Peripheral membrane protein,cytosol
纯化	Affinity purification

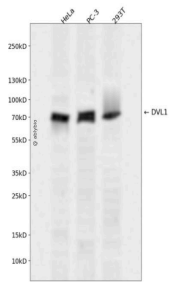
抗原信息

抗原信息	Recombinant fusion protein containing a sequence corresponding to amino acids 510-640 of human DVL1 (NP_004412.2).
------	--

靶点信息

研究背景	DVL1, the human homolog of the Drosophila dishevelled gene (dsh) encodes a cytoplasmic phosphoprotein that regulates cell proliferation, acting as a transducer molecule for developmental processes, including segmentation and neuroblast specification. DVL1 is a candidate gene for neuroblastomatous transformation. The Schwartz-Jampel syndrome and Charcot-Marie-Tooth disease type 2A have been mapped to the same region as DVL1. The phenotypes of these diseases may be consistent with defects which might be expected from aberrant expression of a DVL gene during development.
基因ID	1855
基因名	DVL1
Swiss	O14640 (https://www.uniprot.org/uniprotkb/O14640/entry)
别名	DVL1,DRS2,DVL,DVL1L1,DVL1P1,DVL1 Rabbit pAb,DSH homolog 1

产品验证



Western blot analysis of DVL1 expressed in HeLa, PC-3, 293T using DVL1 Rabbit pAb at 1:1000. Secondary antibody: HRP Goat Anti-Rabbit IgG (H+L) at 1:5000. Lysates/proteins: 30ug per lane. Blocking buffer: 5% non-fat dry milk in TBST. Detection: ECL Enhanced Kit. Exposure time: 120s.

实验步骤

访问官网浏览详情: www.ablybio.cn (<https://www.ablybio.cn/www.ablybio.cn>)