

Leptin Rabbit pAb

货号: **AYP11816**

产品信息

反应	Human,Mouse,Rat
宿主	Rabbit
克隆性	Polyclonal
预测反应	WB: Human colon cancer cell , Homo sapiens IHC: Human colon cancer cell Electrochemical Sensing: Rattus norvegicus
应用	WB IF/ICC
推荐浓度	WB: 1:500 - 1:1000 IF/ICC: 1:50 - 1:200
理论分子量	18kDa
实测分子量	15KDa
形式	Liquid
保存条件	Store at -20°C. Avoid freeze / thaw cycles. Buffer: PBS with 0.05% proclin300,50% glycerol,pH7.3.
偶联物	Unconjugated
阳性对照	HepG2,BxPC-3,RD,Mouse kidney,Rat testis
细胞定位	Secreted
纯化	Affinity purification

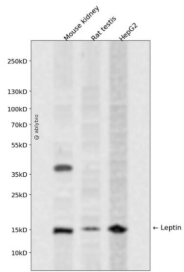
抗原信息

抗原信息	A synthetic peptide corresponding to a sequence within amino acids 1-100 of human Leptin (NP_000221.1).
序列	MHWGTLGFLWLWPYLFYVQAVPIQKVQDDTKLIKTIVTRINDISHTQSVSSKQKVTGLDFIPGLHPILTLKMDQTLAVYQQILTSMPSRNVIQISND

靶点信息

研究背景	This gene encodes a protein that is secreted by white adipocytes, and which plays a major role in the regulation of body weight. This protein, which acts through the leptin receptor, functions as part of a signaling pathway that can inhibit food intake and/or regulate energy expenditure to maintain constancy of the adipose mass. This protein also has several endocrine functions, and is involved in the regulation of immune and inflammatory responses, hematopoiesis, angiogenesis and wound healing. Mutations in this gene and/or its regulatory regions cause severe obesity, and morbid obesity with hypogonadism. This gene has also been linked to type 2 diabetes mellitus development.
基因ID	3952
基因名	LEP
Swiss	P41159
别名	LEP;LEPD;OB;OBS;leptin

产品验证



Western blot analysis of Leptin expressed in Mouse kidney,Rat testis,HepG2 using Leptin Rabbit pAb at 1:1000. Secondary antibody: HRP Goat Anti-Rabbit IgG (H+L) at 1:5000. Lysates/proteins: 30ug per lane. Blocking buffer: 5% non-fat dry milk in TBST. Detection: ECL Enhanced Kit. Exposure time: 120s.

实验步骤

访问官网浏览详情: www.ablybio.cn