

KDM6B/JMJD3 Rabbit pAb

货号: AYP11771

产品信息

反应	Human,Mouse,Rat
宿主	Rabbit
克隆性	Polyclonal
预测反应	WB: Homo sapiens , Mus musculus IHC: Homo sapiens
应用	WB IHC IF/ICC
推荐浓度	WB: 1:500 - 1:2000 IHC: 1:50 - 1:200 IF/ICC: 1:50 - 1:200
理论分子量	176kDa
实测分子量	177kDa
形式	Liquid
保存条件	Store at -20°C. Avoid freeze / thaw cycles. Buffer: PBS with 0.01% thiomersal,50% glycerol,pH7.3.
偶联物	Unconjugated
阳性对照	K562,HeLa,A-431,mouse liver
细胞定位	Nucleus
纯化	Affinity purification

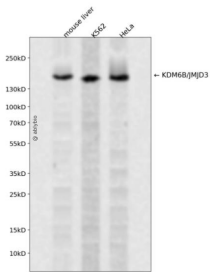
抗原信息

抗原信息	Recombinant fusion protein containing a sequence corresponding to amino acids 90-190 of mouse KDM6 B/JMJD3 (NP_001017426.1).
序列	LESLHGCVQALLREPAQPLWEQLGQLYESEHDSEEAVCCYHRALRYGGSF AELGPRIGRLQQAQLWNFHAGSCQHRAK VLPPLEQVWNLLHLEHKRNYGA

靶点信息

研究背景	The protein encoded by this gene is a lysine-specific demethylase that specifically demethylates di- or trimethylated lysine 27 of histone H3 (H3K27me2 or H3K27me3). H3K27 trimethylation is a repressive epigenetic mark controlling chromatin organization and gene silencing. This protein can also demethylate non-histone proteins such as retinoblastoma protein. Through its demethylation activity this gene influences cellular differentiation and development, tumorigenesis, inflammatory diseases, and neurodegenerative diseases. This protein has two classical nuclear localization signals at its N-terminus. Alternative splicing results in multiple transcript variants encoding distinct isoforms. [provided by RefSeq, Feb 2017]
基因ID	23135
基因名	KDM6B
Swiss	
别名	KDM6B;JMJD3;Kdm6b

产品验证



Western blot analysis of KDM6B/JMJD3 expressed in mouse liver, K562, HeLa using KDM6B/JMJD3 Rabbit pAb at 1:1000. Secondary antibody: HRP Goat Anti-Rabbit IgG (H+L) at 1:5000. Lysates/proteins: 30ug per lane. Blocking buffer: 5% non-fat dry milk in TBST. Detection: ECL Enhanced Kit. Exposure time: 120s.

实验步骤

访问官网浏览详情: www.ablybio.cn