

DRP1 Rabbit pAb

货号: **AYP11770**

产品信息

反应	Human,Mouse,Rat
宿主	Rabbit
克隆性	Polyclonal
预测反应	WB: Homo sapiens , Sus scrofa , Gallus gallus , Rattus norvegicus
应用	WB IF/ICC
推荐浓度	WB: 1:500 - 1:2000 IF/ICC: 1:50 - 1:200
理论分子量	60kDa/78kDa/79kDa/80kDa/81kDa/82kDa/83kDa
实测分子量	82kDa
形式	Liquid
保存条件	Store at -20°C. Avoid freeze / thaw cycles. Buffer: PBS with 0.05% proclin300,50% glycerol,pH7.3.
偶联物	Unconjugated
阳性对照	mouse brain,mouse heart,rat brain,A-549
细胞定位	Cytoplasm,Cytoplasmic vesicle,Endomembrane system,Golgi apparatus,Membrane,Mitochondrion outer membrane,Peripheral membrane protein,Peroxisome,clathrin-coated pit,cytosol,secretory vesicle,synaptic vesicle membrane
纯化	Affinity purification

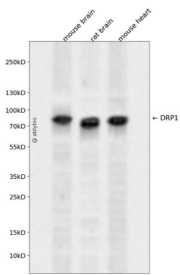
抗原信息

抗原信息	Recombinant fusion protein containing a sequence corresponding to amino acids 437-736 of human DNM 1L (NP_036192.2).
序列	EEMQRIIQHCSNYSTQELLRFPKLHDAIVEVVTCLLRKRLPVTNEMVHNLVAIELAYINTKHPDFADACGLMNNNIEEQRRNR LARELPSAVSRDKSSKVPSALAPASQEPSPAASAEADGKLIQDSRRETKNVASGGGGVGDGVQEPTTGNWRGMLKTSK AEELLAEEKSKPIIMPASPQKGHAVNLLDVPVPVARKLSAREQRDCEVIERLIKSIFLIVRKNIQDSVPKAVMHFLVNHVKDT LQSELVGLYKSSLLDLDLLESEDMAQRRKEADMLKALQGASQIIAEIRETHLW

靶点信息

研究背景	This gene encodes a member of the dynamin superfamily of GTPases. The encoded protein mediates mitochondrial and peroxisomal division, and is involved in developmentally regulated apoptosis and programmed necrosis. Dysfunction of this gene is implicated in several neurological disorders, including Alzheimer's disease. Mutations in this gene are associated with the autosomal dominant disorder, encephalopathy, lethal, due to defective mitochondrial and peroxisomal fission (EMPF). Alternative splicing results in multiple transcript variants encoding different isoforms.
基因ID	10059
基因名	DNM1L
Swiss	O00429
别名	DNM1L;DLP1;DRP1;DVLP;DYMPLE;EMPF;EMPF1;HDYNIV

产品验证



Western blot analysis of DRP1 expressed in mouse brain, rat brain, mouse heart using DRP1 Rabbit pAb at 1:1000. Secondary antibody: HRP Goat Anti-Rabbit IgG (H+L) at 1:5000. Lysates/proteins: 30ug per lane. Blocking buffer: 5% non-fat dry milk in TBST. Detection: ECL Enhanced Kit. Exposure time: 120s.

实验步骤

访问官网浏览详情: www.ablybio.cn