

Phospho-ERK1-T202/Y204 + ERK2-T185/Y187 Rabbit pAb

货号: AYP11767

产品信息

反应	Human,Mouse
宿主	Rabbit
克隆性	Polyclonal
预测反应	WB: Rattus norvegicus , floral , Homo sapiens , Bos taurus
应用	WB
推荐浓度	WB: 1:500 - 1:2000
理论分子量	
实测分子量	42KDa/44KDa
形式	Liquid
保存条件	Store at -20°C. Avoid freeze / thaw cycles. Buffer: PBS with 0.05% proclin300,50% glycerol,pH7.3.
偶联物	Unconjugated
阳性对照	
细胞定位	caveola,cytoplasm,cytoskeleton,cytosol,early endosome,endoplasmic reticulum lumen,extracellular region,focal adhesion,Golgi apparatus,late endosome,microtubule organizing center,mitochondrion,mitotic spindle,nucleoplasm,nucleus,plasma membrane
纯化	Affinity purification

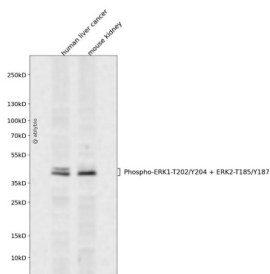
抗原信息

抗原信息	A synthetic phosphorylated peptide around T185/Y187 of human ERK2 (NP_002736.3).
序列	LTEYV

靶点信息

研究背景	This gene encodes a member of the MAP kinase family. MAP kinases, also known as extracellular signal-regulated kinases (ERKs), act as an integration point for multiple biochemical signals, and are involved in a wide variety of cellular processes such as proliferation, differentiation, transcription regulation and development. The activation of this kinase requires its phosphorylation by upstream kinases. Upon activation, this kinase translocates to the nucleus of the stimulated cells, where it phosphorylates nuclear targets. One study also suggests that this protein acts as a transcriptional repressor independent of its kinase activity. The encoded protein has been identified as a moonlighting protein based on its ability to perform mechanistically distinct functions. Two alternatively spliced transcript variants encoding the same protein, but differing in the UTRs, have been reported for this gene. [provided by RefSeq, Jan 2014]
基因ID	5594, 5595
基因名	MAPK1
Swiss	P28482,P27361
别名	

产品验证



Western blot analysis of Phospho-ERK1-T202/Y204 + ERK2-T185/Y187 expressed in human liver cancer, mouse kidney using Phospho-ERK1-T202/Y204 + ERK2-T185/Y187 Rabbit pAb at 1:1000. Secondary antibody: HRP Goat Anti-Rabbit IgG (H+L) at 1:5000. Lysates/proteins: 30ug per lane. Blocking buffer: 5% non-fat dry milk in TBST. Detection: ECL Enhanced Kit. Exposure time: 120s.

实验步骤

访问官网浏览详情: www.ablybio.cn