

Clathrin heavy chain Rabbit pAb

货号: **AYP11740**

产品信息

反应	Human,Mouse,Rat
宿主	Rabbit
克隆性	Polyclonal
预测反应	WB: Homo sapiens , Sus scrofa , Bombyx mori IF: Sus scrofa IP: Sus scrofa
应用	WB IF/ICC
推荐浓度	WB: 1:500 - 1:2000 IF/ICC: 1:50 - 1:200
理论分子量	187kDa/191kDa
实测分子量	191kDa
形式	Liquid
保存条件	Store at -20°C. Avoid freeze / thaw cycles. Buffer: PBS with 0.01% thiomersal,50% glycerol,pH7.3.
偶联物	Unconjugated
阳性对照	HeLa,HepG2,NIH/3T3,Mouse brain,Mouse lung,Rat brain
细胞定位	Cytoplasmic side,Cytoplasmic vesicle membrane,Melanosome,Membrane,Peripheral membrane protein,c oated pit
纯化	Affinity purification

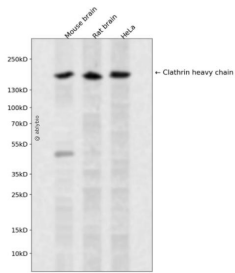
抗原信息

抗原信息	Recombinant fusion protein containing a sequence corresponding to amino acids 1451-1675 of human Clathrin heavy chain (NP_004850.1).
序列	YLRVQNHNNKSVNESLNNLFITEEDYQALRTSIDAYDNFDNISLAQRLEKHELIEFRRIAAYLFGNRRWKQSVELCKKDS LYKDAMQYASESKDTELAEELLQWFLQEERECFGACLFCTCYDLLRPDVVLETAWRHNIMDFAMPYFIQVMKEYLTKVDKL DASESLRKEEEQATETQPIVYGQPQLMLTAGPSVAVPPQAPFGYGYTAPPYGPQPGFGYSM

靶点信息

研究背景	Clathrin is a major protein component of the cytoplasmic face of intracellular organelles, called coated vesicles and coated pits. These specialized organelles are involved in the intracellular trafficking of receptors and endocytosis of a variety of macromolecules. The basic subunit of the clathrin coat is composed of three heavy chains and three light chains.
基因ID	1213
基因名	CLTC
Swiss	Q00610
别名	CLTC;CHC;CHC17;CLH-17;CLTCL2;Hc

产品验证



Western blot analysis of Clathrin heavy chain expressed in Mouse brain, Rat brain, HeLa using Clathrin heavy chain Rabbit pAb at 1:1000. Secondary antibody: HRP Goat Anti-Rabbit IgG (H+L) at 1:5000. Lysates/proteins: 30ug per lane. Blocking buffer: 5% non-fat dry milk in TBST. Detection: ECL Enhanced Kit. Exposure time: 120s.

实验步骤

访问官网浏览详情: www.ablybio.cn