

NOD1 Rabbit pAb

货号: **AYP11739**

产品信息

反应	Human,Mouse,Rat
宿主	Rabbit
克隆性	Polyclonal
预测反应	WB: Homo sapiens , Mus musculus IHC: Mus musculus
应用	WB IHC
推荐浓度	WB: 1:500 - 1:2000 IHC: 1:50 - 1:200
理论分子量	27kDa/107kDa
实测分子量	108kDa
形式	Liquid
保存条件	Store at -20°C. Avoid freeze / thaw cycles. Buffer: PBS with 0.01% thiomersal,50% glycerol,pH7.3.
偶联物	Unconjugated
阳性对照	LO2,293T
细胞定位	Apical cell membrane,Basolateral cell membrane,Cell membrane,Cytoplasm
纯化	Affinity purification

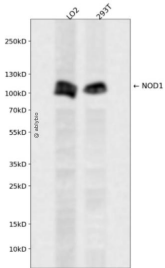
抗原信息

抗原信息	Recombinant fusion protein containing a sequence corresponding to amino acids 1-270 of human NOD1 (NP_006083.1).
序列	MEEQGHSEMEIIPSESHPHIQLLKS NRELLVTHIRNTQCLVDNLLKNDYFSAEDAEIVCACPTQPKVRKILDLVQSKGEEVS EFFLYLLQQLADAYVDLRPWLLEIGFSPSLLTQSKVVNTDPVSRYTQQLRHHLGRDSKFVLCYAQKEELLLEEIYMDTIMEL VGFSNESLGSLSLACLDDHTTGILNEQGETIFILGDAGVVGKSMMLLQRLQSLWATGRLDAGVKFFFHFRCRMFSCKESD RLCLQDLLFKHYCYPERPPEEVFA

靶点信息

研究背景	This gene encodes a member of the NOD (nucleotide-binding oligomerization domain) family. This member is a cytosolic protein. It contains an N-terminal caspase recruitment domain (CARD), a centrally located nucleotide-binding domain (NBD), and 10 tandem leucine-rich repeats (LRRs) in its C terminus. The CARD is involved in apoptotic signaling, LRRs participate in protein-protein interactions, and mutations in the NBD may affect the process of oligomerization and subsequent function of the LRR domain. This protein is an intracellular pattern-recognition receptor (PRR) that initiates inflammation in response to a subset of bacteria through the detection of bacterial diaminopimelic acid. Multiple alternatively spliced transcript variants differing in the 5' UTR have been described, but the full-length nature of these variants has not been determined.
基因ID	10392
基因名	NOD1
Swiss	Q9Y239
别名	NOD1;CARD4;CLR7.1;NLRC1

产品验证



Western blot analysis of NOD1 expressed in LO2,293T using NOD1 Rabbit pAb at 1:1000. Secondary antibody: HRP Goat Anti-Rabbit IgG (H+L) at 1:5000. Lysates/proteins: 30ug per lane. Blocking buffer: 5% non-fat dry milk in TBST. Detection: ECL Enhanced Kit. Exposure time: 120s.

实验步骤

访问官网浏览详情: www.ablybio.cn