

# Clusterin alpha chain Rabbit pAb

货号: **AYP11734**

## 产品信息

反应	Human,Mouse,Rat
宿主	Rabbit
克隆性	Polyclonal
预测反应	<b>WB:</b> Homo sapiens , Mus musculus
应用	<a href="#">WB</a> <a href="#">IHC</a> <a href="#">IF/ICC</a>
推荐浓度	<b>WB:</b> 1:500 - 1:2000 <b>IHC:</b> 1:50 - 1:200 <b>IF/ICC:</b> 1:50 - 1:200
理论分子量	32kDa/48kDa/52kDa/53kDa/57kDa
实测分子量	38kDa/57kDa
形式	Liquid
保存条件	Store at -20°C. Avoid freeze / thaw cycles. Buffer: PBS with 0.02% sodium azide,50% glycerol,pH7.3.
偶联物	Unconjugated
阳性对照	HepG2,U-251MG,Human plasma,Mouse plasma
细胞定位	Cytoplasm,Cytoplasmic side,Cytoplasmic vesicle,Endoplasmic reticulum,Microsome,Mitochondrion membrane,Nucleus,Peripheral membrane protein,Secreted,chromaffin granule,cytosol,secretory vesicle
纯化	Affinity purification

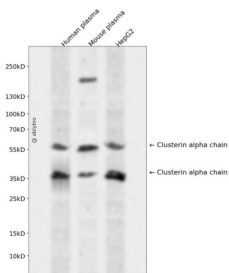
## 抗原信息

抗原信息	Recombinant fusion protein containing a sequence corresponding to amino acids 220-449 of human Clusterin alpha chain (NP_976084.1).
序列	FPKSRIVRSLMPFSPYEPLNFHAMFQPFLEMIHEAQAMDIIHFHSPAFQHPPTFEFIREGDDDRTVCREIRHNSTGCLRMKDQCDKCREILSVDCSTNNPSQAKLRRELDLQVAERLTRKYNELLKSYQWKMLNTSSLLEQLNEQFNWVSRLANLTQGEDQYYLRVTTVASHTSDSDVPSGVTEVVVKLFDSDPITVTPVEVSRKNPKFMETVAEKALQEYRKKHREE

## 靶点信息

研究背景	The protein encoded by this gene is a secreted chaperone that can under some stress conditions also be found in the cell cytosol. It has been suggested to be involved in several basic biological events such as cell death, tumor progression, and neurodegenerative disorders. Alternate splicing results in both coding and non-coding variants.
基因ID	1191
基因名	CLU
Swiss	P10909
别名	CLU;AAG4;APO-J;APOJ;CLI;CLU1;CLU2;KUB1;NA1/NA2;SGP-2;SGP2;SP-40;TRPM-2;TRPM2;clusterin

## 产品验证



Western blot analysis of Clusterin alpha chain expressed in Human plasma, Mouse plasma, HepG2 using Clusterin alpha chain Rabbit pAb at 1:1000. Secondary antibody: HRP Goat Anti-Rabbit IgG (H+L) at 1:5000. Lysates/proteins: 30ug per lane. Blocking buffer: 5% non-fat dry milk in TBST. Detection: ECL Enhanced Kit. Exposure time: 120s.

## 实验步骤

访问官网浏览详情: [www.ablybio.cn](http://www.ablybio.cn)