

Serotonin transporter Rabbit pAb

货号: AYP11733

产品信息

反应	Human,Mouse,Rat
宿主	Rabbit
克隆性	Polyclonal
预测反应	WB: Zea mays , Mus musculus IF: Zea mays IHC: Mus musculus
应用	WB IHC
推荐浓度	WB: 1:100 - 1:500 IHC: 1:50 - 1:200
理论分子量	70kDa/74kDa
实测分子量	70KDa
形式	Liquid
保存条件	Store at -20°C. Avoid freeze / thaw cycles. Buffer: PBS with 0.05% proclin300,50% glycerol,pH7.3.
偶联物	Unconjugated
阳性对照	Rat lung
细胞定位	Cell membrane,Endomembrane system,Endosome membrane,Multi-pass membrane protein
纯化	Affinity purification

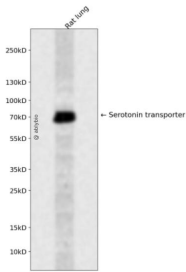
抗原信息

抗原信息	A synthetic peptide corresponding to a sequence within amino acids 500 to the C-terminus of human Serotonin transporter (NP_001036.1).
序列	AVLTVALIEAVAVSWFYGITQFCRDVKEMLGFSFGWFWRICWVAISPLFLLFIICSFLMSPQLRRLFQYNYPYWSIILGYCIGTSSFICPTIYIAYRLIITPGTFKERIISITPETPTEIPCGDIRLNAV

靶点信息

研究背景	This gene encodes an integral membrane protein that transports the neurotransmitter serotonin from synaptic spaces into presynaptic neurons. The encoded protein terminates the action of serotonin and recycles it in a sodium-dependent manner. This protein is a target of psychomotor stimulants, such as amphetamines and cocaine, and is a member of the sodium:neurotransmitter symporter family. A repeat length polymorphism in the promoter of this gene has been shown to affect the rate of serotonin uptake and may play a role in sudden infant death syndrome, aggressive behavior in Alzheimer disease patients, and depression-susceptibility in people experiencing emotional trauma.
基因ID	6532
基因名	SLC6A4
Swiss	P31645
别名	5-HTT;5-HTTLPR;5HTT;HTT;OCD1;SERT;SERT1;hSERT;SLC6A4

产品验证



Western blot analysis of Serotonin transporter expressed in Rat lung using Serotonin transporter Rabbit pAb at 1:1000. Secondary antibody: HRP Goat Anti-Rabbit IgG (H+L) at 1:5000. Lysates/proteins: 30ug per lane. Blocking buffer: 5% non-fat dry milk in TBST. Detection: ECL Enhanced Kit. Exposure time: 12 0s.

实验步骤

访问官网浏览详情: www.ablybio.cn