

CD68 Rabbit pAb

货号: **AYP11731**

产品信息

| | |
|-------|---|
| 反应 | Human,Mouse,Rat |
| 宿主 | Rabbit |
| 克隆性 | Polyclonal |
| 预测反应 | IF: Mus musculus IHC: Mus musculus WB: Rattus norvegicus |
| 应用 | WB IF/ICC |
| 推荐浓度 | WB: 1:500 - 1:1000 IF/ICC: 1:50 - 1:200 |
| 理论分子量 | 31kDa/34kDa/37kDa |
| 实测分子量 | 70-80KDa |
| 形式 | Liquid |
| 保存条件 | Store at -20°C. Avoid freeze / thaw cycles. Buffer: PBS with 0.01% thiomersal,50% glycerol,pH7.3. |
| 偶联物 | Unconjugated |
| 阳性对照 | Raji,THP-1,U-937,RAW264.7,Mouse liver,Rat liver |
| 细胞定位 | Cell membrane,Endosome membrane,Lysosome membrane,Single-pass type I membrane protein,Single-pass type I membrane protein |
| 纯化 | Affinity purification |

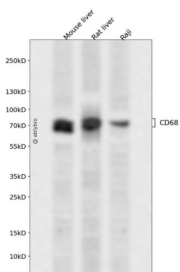
抗原信息

| | |
|------|--|
| 抗原信息 | Recombinant fusion protein containing a sequence corresponding to amino acids 16-200 of human CD68 (NP_001242.2). |
| 序列 | AAQGTGNDCPHKKSATLLPSFTVTPTVTESTGTTSHRRTTKSHKTTTHTTTTTGTTSHGPTTATHNPTTTSHGNVTVHPTSN STATSQGPSTATHSPATTSHGNATVHPTSNSTATSPGFTSSAHPPEPPPPSPSPSPTSKETIGDYWTNGSQPCVHLQAQIQ IRVMYTTQGGGEAWGISVLNPNK |

靶点信息

| | |
|-------|--|
| 研究背景 | This gene encodes a 110-kD transmembrane glycoprotein that is highly expressed by human monocytes and tissue macrophages. It is a member of the lysosomal/endosomal-associated membrane glycoprotein (LAMP) family. The protein primarily localizes to lysosomes and endosomes with a smaller fraction circulating to the cell surface. It is a type I integral membrane protein with a heavily glycosylated extracellular domain and binds to tissue- and organ-specific lectins or selectins. The protein is also a member of the scavenger receptor family. Scavenger receptors typically function to clear cellular debris, promote phagocytosis, and mediate the recruitment and activation of macrophages. Alternative splicing results in multiple transcripts encoding different isoforms. |
| 基因ID | 968 |
| 基因名 | CD68 |
| Swiss | P34810 |
| 别名 | CD68;GP110;LAMP4;SCARD1 |

产品验证



Western blot analysis of CD68 expressed in Mouse liver, Rat liver, Raji using CD68 Rabbit pAb at 1:1000. Secondary antibody: HRP Goat Anti-Rabbit IgG (H+L) at 1:5000. Lysates/proteins: 30ug per lane. Blocking buffer: 5% non-fat dry milk in TBST. Detection: ECL Enhanced Kit. Exposure time: 120s.

实验步骤

访问官网浏览详情: www.ablybio.cn