

PTHLH Rabbit pAb

货号: **AYP11723**

产品信息

反应	Human,Mouse,Rat
宿主	Rabbit
克隆性	Polyclonal
预测反应	WB: Homo sapiens , Mus musculus IHC: Mus musculus , Homo sapiens
应用	WB
推荐浓度	WB: 1:100 - 1:500
理论分子量	19kDa/20kDa/23kDa
实测分子量	20kDa
形式	Liquid
保存条件	Store at -20°C. Avoid freeze / thaw cycles. Buffer: PBS with 0.02% sodium azide,50% glycerol,pH7.3.
偶联物	Unconjugated
阳性对照	HepG2
细胞定位	Cytoplasm,Nucleus,Secreted
纯化	Affinity purification

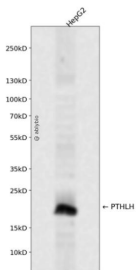
抗原信息

抗原信息	Recombinant fusion protein containing a sequence corresponding to amino acids 25-175 of human PTHLH (NP_945315.1).
序列	RSVEGLSRRLKRAVSEHQLLHDKGKSIQDLRRRFFLHHLIAEIHTAEIRATSEVSPNSKPSNTKNHPVRFSGSDDEGRYLTQ ETNKVETYKEQPLKTPGKKGKPGKRKEQEKKRRTSAWLDSGVTGSGLEGDHLSDTSTTSLELDSR

靶点信息

研究背景	The protein encoded by this gene is a member of the parathyroid hormone family. This hormone, via its receptor, PTHR1, regulates endochondral bone development and epithelial-mesenchymal interactions during the formation of the mammary glands and teeth. It is responsible for most cases of humoral hypercalcemia of malignancy, and mutations in this gene are associated with brachydactyly type E2 (BDE2). Alternatively spliced transcript variants have been found for this gene. There is also evidence for alternative translation initiation from non-AUG (CUG and GUG) start sites, downstream of the initiator AUG codon, resulting in nuclear forms of this hormone.
基因ID	5744
基因名	PTHLH
Swiss	P12272
别名	PTHLH;BDE2;HHM;PLP;PTHR;PTHRP

产品验证



Western blot analysis of PTHLH expressed in HepG2 using PTHLH Rabbit pAb at 1:1000. Secondary antibody: HRP Goat Anti-Rabbit IgG (H+L) at 1:5000. Lysates/proteins: 30ug per lane. Blocking buffer: 5% non-fat dry milk in TBST. Detection: ECL Enhanced Kit. Exposure time: 120s.

实验步骤

访问官网浏览详情: www.ablybio.cn