

— ABLYBIO, Help Your Research



# HB-EGF Rabbit pAb

货号: **AYP11720**

## 产品信息

反应	Human,Mouse,Rat
宿主	Rabbit
克隆性	Polyclonal
预测反应	<b>WB:</b> Homo sapiens , Rattus norvegicus <b>IF:</b> Homo sapiens , Rattus norvegicus <b>IHC:</b> Homo sapiens
应用	WB IF/ICC
推荐浓度	<b>WB:</b> 1:500 - 1:1000 <b>IF/ICC:</b> 1:50 - 1:200
理论分子量	23kDa
实测分子量	23KDa
形式	Liquid
保存条件	Store at -20°C. Avoid freeze / thaw cycles. Buffer: PBS with 0.05% proclin300,50% glycerol,pH7.3.
偶联物	Unconjugated
阳性对照	Rat kidney
细胞定位	Cell membrane,Secreted,Single-pass type I membrane protein,extracellular space
纯化	Affinity purification

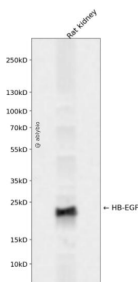
## 抗原信息

抗原信息	Recombinant fusion protein containing a sequence corresponding to amino acids 20-160 of human HB-EGF (NP_001936.1).
------	---------------------------------------------------------------------------------------------------------------------

## 靶点信息

研究背景	Heparin-binding EGF-like growth factor (HB-EGF) is a 12-16 kDa member of the epidermal growth factor (EGF) family. It possesses an EGF-like domain, and a heparin-binding motif. Mature HB-EGF is a soluble peptide that arises from proteolytic processing of the transmembrane form. Human HB-EGF shows 76% and 73% amino acid sequence identity with rat and mouse HB-EGF, respectively. It is required for normal cardiac valve formation and normal heart function, promotes smooth muscle cell proliferation. It may be involved in macrophage-mediated cellular proliferation; it is mitogenic for fibroblasts, but not endothelial cells. HB-EGF is classified as a group 2 ErbB ligand based on its ability to activate both the EGF/ErbB1 and ErbB4 receptors. Activity associated with ErbB4 binding appears to be limited to non-mitogenic actions, while EGFR binding induces both mitogenic and non-mitogenic activity.
基因ID	1839
基因名	HBEGF
Swiss	Q99075 ( <a href="https://www.uniprot.org/uniprotkb/Q99075/entry">https://www.uniprot.org/uniprotkb/Q99075/entry</a> )
别名	HBEGF, DTR, DTS, DTSF, HEGFL, HB-EGF Rabbit pAb, Diphtheria toxin receptor

## 产品验证



Western blot analysis of HB-EGF expressed in Rat kidney using HB-EGF Rabbit pAb at 1:1000. Secondary antibody: HRP Goat Anti-Rabbit IgG (H+L) at 1:5000. Lysates/proteins: 30ug per lane. Blocking buffer: 5% non-fat dry milk in TBST. Detection: ECL Enhanced Kit. Exposure time: 120s.

## 实验步骤

访问官网浏览详情: [www.ablybio.cn](http://www.ablybio.cn) (<https://www.ablybio.cn/www.ablybio.cn>)