

# MMP10 Rabbit pAb

货号: AYP11701

## 产品信息

|       |  |
|-------|--|
| 反应    | Human,Mouse,Rat  |
| 宿主    | Rabbit   |
| 克隆性   | Polyclonal   |
| 预测反应  | <b>WB:</b> Mus musculus , Homo sapiens , Rattus norvegicus<br><b>IHC:</b> Homo sapiens               |
| 应用    | <a href="#">WB</a> <a href="#">IHC</a> <a href="#">IF/ICC</a>  |
| 推荐浓度  | <b>WB:</b> 1:500 - 1:2000<br><b>IHC:</b> 1:50 - 1:200<br><b>IF/ICC:</b> 1:50 - 1:200                 |
| 理论分子量 | 54kDa  |
| 实测分子量 | 54kDa  |
| 形式    | Liquid   |
| 保存条件  | Store at -20°C. Avoid freeze / thaw cycles.<br>Buffer: PBS with 0.01% thiomersal,50% glycerol,pH7.3. |
| 偶联物   | Unconjugated   |
| 阳性对照  | BT-474,MCF7,U-251MG,M21  |
| 细胞定位  | Secreted,extracellular matrix,extracellular space  |
| 纯化    | Affinity purification  |

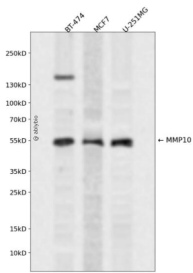
## 抗原信息

|      |   |
|------|---|
| 抗原信息 | A synthetic peptide corresponding to a sequence within amino acids 1-100 of human MMP10 (NP_002416.1).  |
| 序列   | MMHLAFLVLLCLPVC SAYPLSGAAKEEDSNKDLAQQYLEKYNNLEKDVKQFRRKDSNLIVKKIQGMQKFLGLEVTGKLDTDTLEV MRKPRCGVPDVG HFS |

## 靶点信息

|       |  |
|-------|--|
| 研究背景  | This gene encodes a member of the peptidase M10 family of matrix metalloproteinases (MMPs). Proteins in this family are involved in the breakdown of extracellular matrix in normal physiological processes, such as embryonic development, reproduction, and tissue remodeling, as well as in disease processes, such as arthritis and metastasis. The encoded preproprotein is proteolytically processed to generate the mature protease. This secreted protease breaks down fibronectin, laminin, elastin, proteoglycan core protein, gelatins, and several types of collagen. The gene is part of a cluster of MMP genes on chromosome 11. |
| 基因ID  | 4319   |
| 基因名   | MMP10  |
| Swiss | P09238   |
| 别名    | MMP10;SL-2;STMY2;stromelysin-2;MMP10   |

## 产品验证



Western blot analysis of MMP10 expressed in BT-474, MCF7, U-251MG using MMP10 Rabbit pAb at 1:1000. Secondary antibody: HRP Goat Anti-Rabbit IgG (H+L) at 1:5000. Lysates/proteins: 30ug per lane. Blocking buffer: 5% non-fat dry milk in TBST. Detection: ECL Enhanced Kit. Exposure time: 120s.

## 实验步骤

访问官网浏览详情: [www.ablybio.cn](http://www.ablybio.cn)