

RPL26 Rabbit pAb

货号: AYP11690

产品信息

反应	Human,Mouse,Rat
宿主	Rabbit
克隆性	Polyclonal
预测反应	qRT-PCR: Mus musculus WB: Homo sapiens , Mus musculus IF: Mus musculus
应用	WB IF/ICC
推荐浓度	WB: 1:500 - 1:2000 IF/ICC: 1:50 - 1:200
理论分子量	17kDa
实测分子量	20kDa
形式	Liquid
保存条件	Store at -20°C. Avoid freeze / thaw cycles. Buffer: PBS with 0.01% thiomersal,50% glycerol,pH7.3.
偶联物	Unconjugated
阳性对照	K562,HT-29,HeLa,mouse liver,mouse kidney,mouse brain,rat thymus,rat spleen,rat lung
细胞定位	cytoplasm,cytosol,cytosolic ribosome,extracellular exosome,nucleolus,nucleoplasm
纯化	Affinity purification

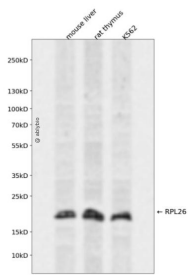
抗原信息

抗原信息	Recombinant fusion protein containing a sequence corresponding to amino acids 20-95 of human RPL26 (NP_000978.1).
序列	NAPSHIRRKIMSSPLSKELRQKYNVRSMPIRKDDDEVQVVRGHYKGQIQIGKVVQVYRKKYVIYIERVQREKANGTTV

靶点信息

研究背景	Ribosomes, the organelles that catalyze protein synthesis, consist of a small 40S subunit and a large 60S subunit. Together these subunits are composed of 4 RNA species and approximately 80 structurally distinct proteins. This gene encodes a ribosomal protein that is a component of the 60S subunit. The protein belongs to the L24P family of ribosomal proteins. It is located in the cytoplasm. As is typical for genes encoding ribosomal proteins, there are multiple processed pseudogenes of this gene dispersed through the genome. Mutations in this gene result in Diamond-Blackfan anemia. Alternative splicing results in multiple transcript variants.
基因ID	6154
基因名	RPL26
Swiss	P61254
别名	RPL26;DBA11;L26

产品验证



Western blot analysis of RPL26 expressed in mouse liver, rat thymus, K562 using RPL26 Rabbit pAb at 1:1000. Secondary antibody: HRP Goat Anti-Rabbit IgG (H+L) at 1:5000. Lysates/proteins: 30ug per lane. Blocking buffer: 5% non-fat dry milk in TBST. Detection: ECL Enhanced Kit. Exposure time: 120s.

实验步骤

访问官网浏览详情: www.ablybio.cn