

Glucokinase (GCK) Rabbit pAb

货号: **AYP11686**

产品信息

反应	Human,Mouse,Rat
宿主	Rabbit
克隆性	Polyclonal
预测反应	WB: Mus musculus , Homo sapiens , Rattus norvegicus
应用	WB
推荐浓度	WB: 1:500 - 1:2000
理论分子量	52kDa
实测分子量	52kDa
形式	Liquid
保存条件	Store at -20°C. Avoid freeze / thaw cycles. Buffer: PBS with 0.02% sodium azide,50% glycerol,pH7.3.
偶联物	Unconjugated
阳性对照	Mouse liver,Rat skeletal muscle
细胞定位	Cytoplasm,Nucleus
纯化	Affinity purification

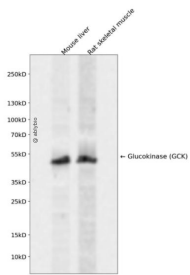
抗原信息

抗原信息	Recombinant fusion protein containing a sequence corresponding to amino acids 1-300 of human Glucokinase (GCK) (NP_000153.1).
序列	MLDDRARMEAAKKEKVEQILAEFQLQEEDLKKVMRRMQEMDRGLRLETHEEASVKMLPTYVRSTPEGSEVGDFLSLDLGGTNFRVMLVKVGEEGQWSVTKKHQMSIPEDAMTGAEMLFDYISECISDFLDKHQMKHKKLPLGFTFSFPVRHEDIKGIILLNWTGFKASGAEGNNVVGLLRDAIKRRGDFEMDVVAMVNDTVATMISCYYEDHQCEVGMIVGTGCNACYMEE MQNVELVEGDEGRMCVNTEWGAFGDSELDEFLLDYDRLVDESSANPGQQLYEKLIIGGKYMGE

靶点信息

研究背景	Hexokinases phosphorylate glucose to produce glucose-6-phosphate, the first step in most glucose metabolism pathways. Alternative splicing of this gene results in three tissue-specific forms of glucokinase, one found in pancreatic islet beta cells and two found in liver. The protein localizes to the outer membrane of mitochondria. In contrast to other forms of hexokinase, this enzyme is not inhibited by its product glucose-6-phosphate but remains active while glucose is abundant. Mutations in this gene have been associated with non-insulin dependent diabetes mellitus (NIDDM), maturity onset diabetes of the young, type 2 (MODY2) and persistent hyperinsulinemic hypoglycemia of infancy (PHHI).
基因ID	2645
基因名	GCK
Swiss	P35557
别名	GCK;FGQTL3;GK;GLK;HHF3;HK4;HKIV;HXKP;LGLK;MODY2

产品验证



Western blot analysis of Glucokinase (GCK) expressed in Mouse liver, Rat skeletal muscle using Glucokinase (GCK) Rabbit pAb at 1:1000. Secondary antibody: HRP Goat Anti-Rabbit IgG (H+L) at 1:5000. Lysates/proteins: 30ug per lane. Blocking buffer: 5% non-fat dry milk in TBST. Detection: ECL Enhanced Kit. Exposure time: 120s.

实验步骤

访问官网浏览详情: www.ablybio.cn