

TET3 Rabbit pAb

货号: **AYP11681**

产品信息

反应	Human,Mouse,Rat
宿主	Rabbit
克隆性	Polyclonal
预测反应	WB: Mus musculus IF: Homo sapiens
应用	WB IHC IF/ICC
推荐浓度	WB: 1:500 - 1:1000 IHC: 1:50 - 1:200 IF/ICC: 1:50 - 1:200
理论分子量	77kDa/166kDa/179kDa
实测分子量	179KDa
形式	Liquid
保存条件	Store at -20°C. Avoid freeze / thaw cycles. Buffer: PBS with 0.05% proclin300,50% glycerol,pH7.3.
偶联物	Unconjugated
阳性对照	HL-60,SH-SY5Y,MCF7,Mouse liver
细胞定位	Cytoplasm,Nucleus
纯化	Affinity purification

抗原信息

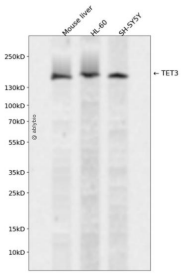
抗原信息	Recombinant fusion protein containing a sequence corresponding to amino acids 1440-1699 of human TE T3 (NP_001274420.1).
序列	GGPSMSPKRTNGVGGSWGVFSSGESPAIVPDKLSSFGASCLAPSHFTDGGQWGLFPGEGQQAASHSGGRLRGKPWSPC KFGNSTSALAGPSLTEKPWALGAGDFNSALKGSPGFQDKLWNP MKGEEGRIPAAGASQLDRAWQSFGLPLGSSEKLF ALKSEEKLWDPFSLEEGPAEPPSKGAVKEEKGGGGAE EEEEEELWSDSEHNFLDENIGGVAVAPAHGSILIECARRELHAT TPLKKPNRCHPTRISLVFYQHKNL

靶点信息

研究背景	Members of the ten-eleven translocation (TET) gene family, including TET3, play a role in the DNA methylation process (Langemeijer et al., 2009 [PubMed 19923888]).[supplied by OMIM, Nov 2010]
------	---

基因ID	200424
基因名	TET3
Swiss	O43151
别名	TET3;hCG_40738;TET3

产品验证



Western blot analysis of TET3 expressed in Mouse liver,HL-60,SH-SY5Y using TET3 Rabbit pAb at 1:1000 . Secondary antibody: HRP Goat Anti-Rabbit IgG (H+L) at 1:5000. Lysates/proteins: 30ug per lane. Blocking buffer: 5% non-fat dry milk in TBST. Detection: ECL Enhanced Kit. Exposure time: 120s.

实验步骤

访问官网浏览详情: www.ablybio.cn