

KDM6A Rabbit pAb

货号: **AYP11679**

产品信息

反应	Human,Mouse,Rat
宿主	Rabbit
克隆性	Polyclonal
预测反应	WB: Homo sapiens , Escherichia coli , Mus musculus IF: Mus musculus
应用	WB IHC
推荐浓度	WB: 1:500 - 1:1000 IHC: 1:50 - 1:200
理论分子量	154kDa/157kDa
实测分子量	180KDa
形式	Liquid
保存条件	Store at -20°C. Avoid freeze / thaw cycles. Buffer: PBS with 0.01% thiomersal,50% glycerol,pH7.3.
偶联物	Unconjugated
阳性对照	T-47D,THP-1(negative)
细胞定位	Nucleus
纯化	Affinity purification

抗原信息

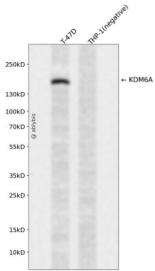
抗原信息	Recombinant fusion protein containing a sequence corresponding to amino acids 550-700 of mouse KDM6A (NP_033509.1).
序列	MPSVSQPGVHTACPRQTLANGPFSAGHVPCSTSRTLGSTDVTLIGNNHVTGSGSNGNVPYLQRNAPTLPHNRTNLTSSTEEPWKNQLSNSTQGLHKGPSSHLAGPNERPLSSTGPSQHLQAAGSGIQNQNGHPTLPSNSVTQGAALNHLS

靶点信息

研究背景	This gene is located on the X chromosome and is the corresponding locus to a Y-linked gene which encodes a tetratricopeptide repeat (TPR) protein. The encoded protein of this gene contains a JmjC-domain and catalyzes the demethylation of tri/dimethylated histone H3. Multiple alternatively spliced transcript variants have been found for this gene.
------	--

基因ID	22289
基因名	
Swiss	
别名	KDM6A;KABUK2;UTX;bA386N14.2

产品验证



Western blot analysis of KDM6A expressed in T-47D, THP-1(negative) using KDM6A Rabbit pAb at 1:1000. Secondary antibody: HRP Goat Anti-Rabbit IgG (H+L) at 1:5000. Lysates/proteins: 30ug per lane. Blocking buffer: 5% non-fat dry milk in TBST. Detection: ECL Enhanced Kit. Exposure time: 120s.

实验步骤

访问官网浏览详情: www.ablybio.cn