

# Phospho-CDK6-Y13 Rabbit pAb

货号: **AYP11662**

## 产品信息

|       |  |
|-------|--|
| 反应    | Human,Mouse  |
| 宿主    | Rabbit   |
| 克隆性   | Polyclonal   |
| 预测反应  | <b>WB:</b> Mus musculus , Homo sapiens<br><b>IF:</b> Homo sapiens                                    |
| 应用    | <a href="#">WB</a> <a href="#">IHC</a> <a href="#">IF/ICC</a>  |
| 推荐浓度  | <b>WB:</b> 1:500 - 1:2000<br><b>IHC:</b> 1:50 - 1:100<br><b>IF/ICC:</b> 1:100 - 1:200                |
| 理论分子量 | 36kDa  |
| 实测分子量 | 37kDa  |
| 形式    | Liquid   |
| 保存条件  | Store at -20°C. Avoid freeze / thaw cycles.<br>Buffer: PBS with 0.01% thiomersal,50% glycerol,pH7.3. |
| 偶联物   | Unconjugated   |
| 阳性对照  | 293  |
| 细胞定位  | Cell projection,Cytoplasm,Nucleus,centrosome,cytoskeleton,microtubule organizing center,ruffle       |
| 纯化    | Affinity purification  |

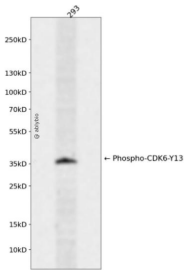
## 抗原信息

|      |  |
|------|--|
| 抗原信息 | A synthetic phosphorylated peptide around Y13 of human CDK6 (NP_001250.1). |
| 序列   | QQYEC  |

## 靶点信息

|       |  |
|-------|--|
| 研究背景  | The protein encoded by this gene is a member of the cyclin-dependent protein kinase (CDK) family. CDK family members are highly similar to the gene products of <i>Saccharomyces cerevisiae</i> cdc28, and <i>Schizosaccharomyces pombe</i> cdc2, and are known to be important regulators of cell cycle progression. This kinase is a catalytic subunit of the protein kinase complex that is important for cell cycle G1 phase progression and G1/S transition. The activity of this kinase first appears in mid-G1 phase, which is controlled by the regulatory subunits including D-type cyclins and members of INK4 family of CDK inhibitors. This kinase, as well as CDK4, has been shown to phosphorylate, and thus regulate the activity of, tumor suppressor protein Rb. Expression of this gene is up-regulated in some types of cancer. Multiple alternatively spliced variants, encoding the same protein, have been identified. |
| 基因ID  | 1021   |
| 基因名   | CDK6   |
| Swiss | Q00534   |
| 别名    | CDK6;MCPH12;PLSTIRE  |

## 产品验证



Western blot analysis of Phospho-CDK6-Y13 expressed in 293 using Phospho-CDK6-Y13 Rabbit pAb at 1:1000. Secondary antibody: HRP Goat Anti-Rabbit IgG (H+L) at 1:5000. Lysates/proteins: 30ug per lane. Blocking buffer: 5% non-fat dry milk in TBST. Detection: ECL Enhanced Kit. Exposure time: 120s.

## 实验步骤

访问官网浏览详情: [www.ablybio.cn](http://www.ablybio.cn)