

LAMC2 Rabbit pAb

货号: **AYP11651**

产品信息

| | |
|-------|--|
| 反应 | Human,Mouse,Rat |
| 宿主 | Rabbit |
| 克隆性 | Polyclonal |
| 预测反应 | IHC: unknown WB: Homo sapiens , Chlorocebus sabaesus |
| 应用 | WB IF/ICC |
| 推荐浓度 | WB: 1:500 - 1:2000 IF/ICC: 1:50 - 1:100 |
| 理论分子量 | 121kDa/130kDa |
| 实测分子量 | 131kDa |
| 形式 | Liquid |
| 保存条件 | Store at -20°C. Avoid freeze / thaw cycles. Buffer: PBS with 0.05% proclin300,50% glycerol,pH7.3. |
| 偶联物 | Unconjugated |
| 阳性对照 | Rat lung |
| 细胞定位 | Secreted,basement membrane,extracellular matrix,extracellular space |
| 纯化 | Affinity purification |

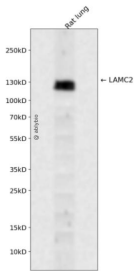
抗原信息

| | |
|------|--|
| 抗原信息 | Recombinant fusion protein containing a sequence corresponding to amino acids 613-800 of human LAMC2 (NP_005553.2). |
| 序列 | YNQVKIQMDQFMQQLQRMEALISKAQGGDGVVPDTELEGRMQAEQALQDILRDAQISEGASRSLGLQLAKVRSQENS YQSRLDDLKMTVERVRALGSQYQNRVRDTHRLITQMQLSLAESEASLGNTNIPASDHVYVGPNGFKSLAQEATRLAESHVE SASNMEQLTRETEDYSKQALSLVRKALHEG |

靶点信息

| | |
|-------|---|
| 研究背景 | This gene encodes the gamma chain isoform laminin, gamma 2. The gamma 2 chain, formerly thought to be a truncated version of beta chain (B2t), is highly homologous to the gamma 1 chain; however, it lacks domain VI, and domains V, IV and III are shorter. It is expressed in several fetal tissues but differently from gamma 1, and is specifically localized to epithelial cells in skin, lung and kidney. The gamma 2 chain together with alpha 3 and beta 3 chains constitute laminin 5 (earlier known as kalinin), which is an integral part of the anchoring filaments that connect epithelial cells to the underlying basement membrane. The epithelium-specific expression of the gamma 2 chain implied its role as an epithelium attachment molecule, and mutations in this gene have been associated with junctional epidermolysis bullosa, a skin disease characterized by blisters due to disruption of the epidermal-dermal junction. Two transcript variants resulting from alternative splicing of the 3' terminal exon, and encoding different isoforms of gamma 2 chain, have been described. The two variants are differentially expressed in embryonic tissues, however, the biological significance of the two forms is not known. Transcript variants utilizing alternative polyA_signal have also been noted in literature. |
| 基因ID | 3918 |
| 基因名 | LAMC2 |
| Swiss | Q13753 |
| 别名 | LAMC2;B2T;BM600;CSF;EBR2;EBR2A;LAMB2T;LAMNB2 |

产品验证



Western blot analysis of LAMC2 expressed in Rat lung using LAMC2 Rabbit pAb at 1:1000. Secondary antibody: HRP Goat Anti-Rabbit IgG (H+L) at 1:5000. Lysates/proteins: 30ug per lane. Blocking buffer: 5% non-fat dry milk in TBST. Detection: ECL Enhanced Kit. Exposure time: 120s.

实验步骤

访问官网浏览详情: www.ablybio.cn