

KLB Rabbit pAb

货号: **AYP11640**

产品信息

反应	Human,Mouse,Rat
宿主	Rabbit
克隆性	Polyclonal
预测反应	IHC: HeLa cells , Rattus norvegicus WB: HeLa cells , Homo sapiens , Rattus norvegicus , Mus musculus IF: Rattus norvegicus
应用	WB
推荐浓度	WB: 1:500 - 1:2000
理论分子量	119kDa
实测分子量	120kDa
形式	Liquid
保存条件	Store at -20°C. Avoid freeze / thaw cycles. Buffer: PBS with 0.01% thiomersal,50% glycerol,pH7.3.
偶联物	Unconjugated
阳性对照	LO2,SGC-7901,rat liver
细胞定位	plasma membrane
纯化	Affinity purification

抗原信息

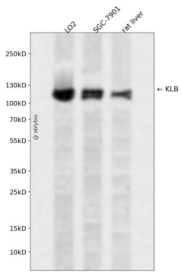
抗原信息	Recombinant fusion protein containing a sequence corresponding to amino acids 720-990 of human KLB (NP_783864.1).
序列	ALAWRLYDRQFRPSQRGAVSLSLHADWAEPANPYADSHWRAAERFLQFEIAWFAEPLFKTGDYPAAMREYIASKHRRGLSSSALPRLTEAERRLLKGTVDFCALNHFTTRFVMHEQLAGSRYDSDRDIQFLQDITRLSSPTRLAVIPWGVKLLRWVRRNYGDMDIYITASGIDDQALEDDRLRKYYLGKYLQEVLKAYLIDKVKRIKGYAFKLAEEKSKPRFGFTSDFKAKSSIQFYNKVISSRGFPFENSSSRCSQTQENTECTVCLF

靶点信息

研究背景	Klotho is an anti-aging single-pass membrane protein predominantly produced in the kidney, with shedding of the amino-terminal extracellular domain into the systemic circulation. Circulating levels of soluble Klotho decrease with age, and the klotho gene is associated with increased risk of age-related diseases.
------	---

基因ID	152831
基因名	KLB
Swiss	Q86Z14
别名	KLB;BKL

产品验证



Western blot analysis of KLB expressed in LO2,SGC-7901, rat liver using KLB Rabbit pAb at 1:1000. Secondary antibody: HRP Goat Anti-Rabbit IgG (H+L) at 1:5000. Lysates/proteins: 30ug per lane. Blocking buffer: 5% non-fat dry milk in TBST. Detection: ECL Enhanced Kit. Exposure time: 120s.

实验步骤

访问官网浏览详情: www.ablybio.cn