

— ABLYBIO, Help Your Research



# MTCO1 Rabbit pAb

货号: **AYP11614**

## 产品信息

反应	Human,Mouse,Rat
宿主	Rabbit
克隆性	Polyclonal
预测反应	<b>WB:</b> Mus musculus , Homo sapiens , Rattus norvegicus
应用	WB IHC IF/ICC
推荐浓度	<b>WB:</b> 1:500 - 1:1000 <b>IHC:</b> 1:50 - 1:200 <b>IF/ICC:</b> 1:50 - 1:200
理论分子量	57kDa
实测分子量	40KDa/37KDa
形式	Liquid
保存条件	Store at -20°C. Avoid freeze / thaw cycles. Buffer: PBS with 0.05% proclin300,50% glycerol,pH7.3.
偶联物	Unconjugated
阳性对照	THP-1,HepG2,HeLa,Mouse liver,Rat kidney
细胞定位	mitochondrial inner membrane,mitochondrial respiratory chain complex III,mitochondrial respiratory chain complex IV
纯化	Affinity purification

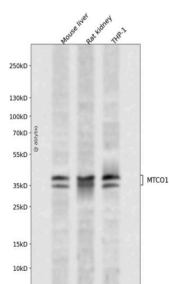
## 抗原信息

抗原信息	A synthetic peptide corresponding to a sequence within amino acids 400-500 of human MTCO1 (YP_002124304.1).
------	---

## 靶点信息

研究背景	MT-CO1 (mitochondrially encoded cytochrome c oxidase I) is a protein-coding gene. Diseases associated with MT-CO1 include pthirus pubis infestation, and echinococcosis.
基因ID	4512
基因名	MT-CO1
Swiss	P00395 ( <a href="https://www.uniprot.org/uniprotkb/P00395/entry">https://www.uniprot.org/uniprotkb/P00395/entry</a> )
别名	COI,MTCO1,COX1,MT-CO1,MTCO1 Rabbit pAb,Cytochrome c oxidase polypeptide I,COXI

## 产品验证



Western blot analysis of MTCO1 expressed in Mouse liver,Rat kidney,THP-1 using MTCO1 Rabbit pAb at 1:1000. Secondary antibody: HRP Goat Anti-Rabbit IgG (H+L) at 1:5000. Lysates/proteins: 30ug per lane. Blocking buffer: 5% non-fat dry milk in TBST. Detection: ECL Enhanced Kit. Exposure time: 120s.

## 实验步骤

访问官网浏览详情: [www.ablybio.cn](http://www.ablybio.cn) (<https://www.ablybio.cn/>[www.ablybio.cn](http://www.ablybio.cn))