

# MEF2C Rabbit pAb

货号: **AYP11591**

## 产品信息

反应	Human,Mouse,Rat
宿主	Rabbit
克隆性	Polyclonal
预测反应	<b>WB:</b> Mus musculus , Gallus gallus domesticus , Rattus norvegicus
应用	<a href="#">WB</a> <a href="#">IHC</a> <a href="#">IF/ICC</a>
推荐浓度	<b>WB:</b> 1:500 - 1:2000 <b>IHC:</b> 1:50 - 1:100 <b>IF/ICC:</b> 1:50 - 1:100
理论分子量	44kDa/47kDa/50kDa/51kDa/52kDa
实测分子量	45kDa
形式	Liquid
保存条件	Store at -20°C. Avoid freeze / thaw cycles. Buffer: PBS with 0.01% thiomersal,50% glycerol,pH7.3.
偶联物	Unconjugated
阳性对照	Mouse brain
细胞定位	Nucleus
纯化	Affinity purification

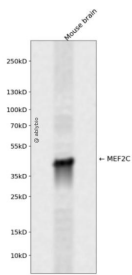
## 抗原信息

抗原信息	Recombinant fusion protein containing a sequence corresponding to amino acids 170-380 of human MEF2 C (NP_001180279.1).
序列	LPLAHPSLQRNSMSPGVTHRPPSAGNTGGLMGGDLTSGAGTSAGNGYGNPRNSPGLLVSPGNLNKNMQAKSPPPMNL GMNNRKPDLRVLIPPGSKNTMPSVSEDVDLLLNQRINNSQSAQSLATPVVSVATPTLPGQGMGGYPSAISTTYGTEYSLS SADLSSLSGFNTASALHLGSVTGWQQQHLHNMPPSALSQLGACTSTHLSQSSNL

## 靶点信息

研究背景	This locus encodes a member of the MADS box transcription enhancer factor 2 (MEF2) family of proteins, which play a role in myogenesis. The encoded protein, MEF2 polypeptide C, has both trans-activating and DNA binding activities. This protein may play a role in maintaining the differentiated state of muscle cells. Mutations and deletions at this locus have been associated with severe mental retardation, stereotypic movements, epilepsy, and cerebral malformation. Alternatively spliced transcript variants have been described.
基因ID	4208
基因名	MEF2C
Swiss	Q06413
别名	MEF2C;C5DELq14.3;DEL5q14.3

## 产品验证



Western blot analysis of MEF2C expressed in Mouse brain using MEF2C Rabbit pAb at 1:1000. Secondary antibody: HRP Goat Anti-Rabbit IgG (H+L) at 1:5000. Lysates/proteins: 30ug per lane. Blocking buffer: 5% non-fat dry milk in TBST. Detection: ECL Enhanced Kit. Exposure time: 120s.

## 实验步骤

访问官网浏览详情: [www.ablybio.cn](http://www.ablybio.cn)