

MTNR1A Rabbit pAb

货号: **AYP11586**

产品信息

反应	Human,Mouse,Rat
宿主	Rabbit
克隆性	Polyclonal
预测反应	WB: Homo sapiens,Mus musculus , Rattus norvegicus IF: Rattus norvegicus , Mus musculus
应用	WB IHC
推荐浓度	WB: 1:1000 - 1:5000 IHC: 1:100 - 1:200
理论分子量	39kDa
实测分子量	39KDa
形式	Liquid
保存条件	Store at -20°C. Avoid freeze / thaw cycles. Buffer: PBS with 0.05% proclin300,50% glycerol,pH7.3.
偶联物	Unconjugated
阳性对照	Mouse eye
细胞定位	Cell membrane,Multi-pass membrane protein
纯化	Affinity purification

抗原信息

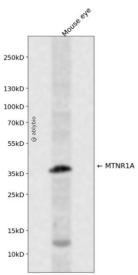
抗原信息	Recombinant fusion protein containing a sequence corresponding to amino acids 281-350 of human MTNR1A (NP_005949.1).
序列	YYMAYFNSCLNIIYGLLNQNFKEYRRIIVSLCTARVFFVDSSNDVADRVKWKPSPLMTNNNVVKVDSV

靶点信息

研究背景	This gene encodes one of two high affinity forms of a receptor for melatonin, the primary hormone secreted by the pineal gland. This receptor is a G-protein coupled, 7-transmembrane receptor that is responsible for melatonin effects on mammalian circadian rhythm and reproductive alterations affected by day length. The receptor is an integral membrane protein that is readily detectable and localized to two specific regions of the brain. The hypothalamic suprachiasmatic nucleus appears to be involved in circadian rhythm while the hypophysial pars tuberalis may be responsible for the reproductive effects of melatonin.
------	--

基因ID	4543
基因名	MTNR1A
Swiss	P48039
别名	MTNR1A;MEL-1A-R;MT1

产品验证



Western blot analysis of MTNR1A expressed in Mouse eye using MTNR1A Rabbit pAb at 1:1000. Secondary antibody: HRP Goat Anti-Rabbit IgG (H+L) at 1:5000. Lysates/proteins: 30ug per lane. Blocking buffer: 5% non-fat dry milk in TBST. Detection: ECL Enhanced Kit. Exposure time: 120s.

实验步骤

访问官网浏览详情: www.ablybio.cn