

# SLC40A1 Rabbit pAb

货号: **AYP11575**

## 产品信息

反应	Human,Mouse
宿主	Rabbit
克隆性	Polyclonal
预测反应	<b>WB:</b> Gallus gallus , Homo sapiens , Mus musculus , Danio rerio , Rattus norvegicus
应用	<a href="#">WB</a>
推荐浓度	<b>WB:</b> 1:100 - 1:500
理论分子量	62kDa
实测分子量	63KDa
形式	Liquid
保存条件	Store at -20°C. Avoid freeze / thaw cycles. Buffer: PBS with 0.05% proclin300,50% glycerol,pH7.3.
偶联物	Unconjugated
阳性对照	HEL,MCF7 negative
细胞定位	Cell membrane,Multi-pass membrane protein
纯化	Affinity purification

## 抗原信息

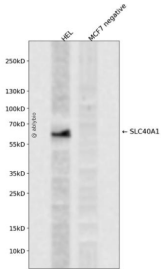
抗原信息	A synthetic peptide corresponding to a sequence within amino acids 200-300 of human SLC40A1 (NP_055400.1).
序列	SPVIGCGFISGWNLVSMCVEYVLLWKVYQKTPALAVKAGLKEEETELKQLNLHKDTEPKPLEGTHLMGVKDSNIHELEHEQ EPTCASQMAEPFRTRFDGWV

## 靶点信息

研究背景	The protein encoded by this gene is a cell membrane protein that may be involved in iron export from duodenal epithelial cells. Defects in this gene are a cause of hemochromatosis type 4 (HFE4).
基因ID	30061
基因名	SLC40A1

<b>Swiss</b>	Q9NP59
别名	SLC40A1;FPN1;HFE4;IREG1;MST079;MSTP079;MTP1;SLC11A3

## 产品验证



Western blot analysis of SLC40A1 expressed in HEL, MCF7 negative using SLC40A1 Rabbit pAb at 1:1000. Secondary antibody: HRP Goat Anti-Rabbit IgG (H+L) at 1:5000. Lysates/proteins: 30ug per lane. Blocking buffer: 5% non-fat dry milk in TBST. Detection: ECL Enhanced Kit. Exposure time: 120s.

## 实验步骤

访问官网浏览详情: [www.ablybio.cn](http://www.ablybio.cn)