

KPNA1 Rabbit pAb

货号: **AYP11568**

产品信息

反应	Human,Mouse,Rat
宿主	Rabbit
克隆性	Polyclonal
预测反应	WB: Homo sapiens , Mus musculus IP: Mus musculus
应用	WB IHC
推荐浓度	WB: 1:500 - 1:2000 IHC: 1:50 - 1:200
理论分子量	60kDa
实测分子量	60kDa/70kDa
形式	Liquid
保存条件	Store at -20°C. Avoid freeze / thaw cycles. Buffer: PBS with 0.02% sodium azide,50% glycerol,pH7.3.
偶联物	Unconjugated
阳性对照	MCF7,K-562,HepG2,HeLa,A-549,Mouse brain,Mouse heart
细胞定位	Cytoplasm,Nucleus
纯化	Affinity purification

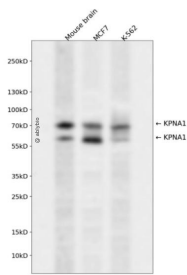
抗原信息

抗原信息	Recombinant fusion protein containing a sequence corresponding to amino acids 1-300 of human KPNA1 (NP_002255.3).
序列	MTTPGKENFRLKSYKNKSLNPDEMRRRRREEEGLQLRKQKREEQLFKRRNVATAEEETEEVMSDGGFHEAQISNMEMAP GGVITSDMIEMIFSKSPEQQLSATQKFRKLLSKEPNPPIDEVISTPGVVARFVEFLKRKENCTLQFESAWVLTNIASGNSLQT RIVIQAGAVPIFIELLSSEFEDVQEAVWALGNIAGDSTMCRDYLDCNLPPLLQLFSKQNRMTMTRNAVWALSNLCRGKS PPPEFAKVSPCLNVLSWLLFVSDTDVLADACWALSYSYLSDGPNDKIQAVIDAGVCRR

靶点信息

研究背景	The transport of molecules between the nucleus and the cytoplasm in eukaryotic cells is mediated by the nuclear pore complex (NPC), which consists of 60-100 proteins. Small molecules (up to 70 kD) can pass through the nuclear pore by nonselective diffusion while larger molecules are transported by an active process. The protein encoded by this gene belongs to the importin alpha family, and is involved in nuclear protein import. This protein interacts with the recombination activating gene 1 (RAG1) protein and is a putative substrate of the RAG1 ubiquitin ligase. Alternative splicing results in multiple transcript variants.
基因ID	3836
基因名	KPNA1
Swiss	P52294
别名	KPNA1;IPOA5;NPI-1;RCH2;SRP1

产品验证



Western blot analysis of KPNA1 expressed in Mouse brain, MCF7, K-562 using KPNA1 Rabbit pAb at 1:1000. Secondary antibody: HRP Goat Anti-Rabbit IgG (H+L) at 1:5000. Lysates/proteins: 30ug per lane. Blocking buffer: 5% non-fat dry milk in TBST. Detection: ECL Enhanced Kit. Exposure time: 120s.

实验步骤

访问官网浏览详情: www.ablybio.cn