

# ATG16L1 Rabbit pAb

货号: **AYP11567**

## 产品信息

反应	Human,Mouse,Rat
宿主	Rabbit
克隆性	Polyclonal
预测反应	<b>IF:</b> Homo sapiens , Sus scrofa <b>WB:</b> Mus musculus , Homo sapiens
应用	<a href="#">WB</a> <a href="#">IHC</a> <a href="#">IF/ICC</a>
推荐浓度	<b>WB:</b> 1:500 - 1:2000 <b>IHC:</b> 1:50 - 1:200 <b>IF/ICC:</b> 1:50 - 1:200
理论分子量	47kDa/49kDa/53kDa/66kDa/68kDa
实测分子量	66KDa/68KDa
形式	Liquid
保存条件	Store at -20°C. Avoid freeze / thaw cycles. Buffer: PBS with 0.02% sodium azide,50% glycerol,pH7.3.
偶联物	Unconjugated
阳性对照	Jurkat,Mouse thymus,Rat thymus
细胞定位	Cytoplasm,Peripheral membrane protein,Preautophagosomal structure membrane
纯化	Affinity purification

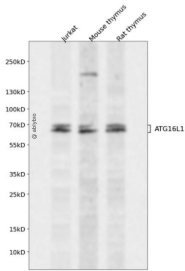
## 抗原信息

抗原信息	Recombinant fusion protein containing a sequence corresponding to amino acids 90-300 of human ATG16 L1 (NP_110430.5).
序列	IKHQEELTELHKRGELAQLVIDLNNQMQRKDREMQMNEAKIAECLQTISDLETECLDLRTRKCLDLERANQTLKDEYDALQI TFTALEGKLRKTTEENQELVTRWMAEKAQEANRLNAENKDSRRRQARLQKELAEAAKEPLPVEQDDDIIVIVDETSDHTE ETSPVRAISRAATKRLSQPAGGLDSITNIFGRRSVSFPVPQDNVDT

## 靶点信息

研究背景	The protein encoded by this gene is part of a large protein complex that is necessary for autophagy, the major process by which intracellular components are targeted to lysosomes for degradation. Defects in this gene are a cause of susceptibility to inflammatory bowel disease type 10 (IBD10). Several transcript variants encoding different isoforms have been found for this gene.
基因ID	55054
基因名	ATG16L1
Swiss	Q676U5
别名	ATG16L1;APG16L;ATG16A;ATG16L;IBD10;WDR30

## 产品验证



Western blot analysis of ATG16L1 expressed in Jurkat, Mouse thymus, Rat thymus using ATG16L1 Rabbit pAb at 1:1000. Secondary antibody: HRP Goat Anti-Rabbit IgG (H+L) at 1:5000. Lysates/proteins: 30ug per lane. Blocking buffer: 5% non-fat dry milk in TBST. Detection: ECL Enhanced Kit. Exposure time: 12 0s.

## 实验步骤

访问官网浏览详情: [www.ablybio.cn](http://www.ablybio.cn)