

KLF2 Rabbit pAb

货号: **AYP11563**

产品信息

反应	Human
宿主	Rabbit
克隆性	Polyclonal
预测反应	IF: Mus musculus , Homo sapiens , Rattus norvegicus WB: Rattus norvegicus , Mus musculus
应用	WB
推荐浓度	WB: 1:1000 - 1:5000
理论分子量	37kDa
实测分子量	37KDa
形式	Liquid
保存条件	Store at -20°C. Avoid freeze / thaw cycles. Buffer: PBS with 0.05% proclin300,50% glycerol,pH7.3.
偶联物	Unconjugated
阳性对照	PC-3,U-251MG,U-937
细胞定位	Nucleus
纯化	Affinity purification

抗原信息

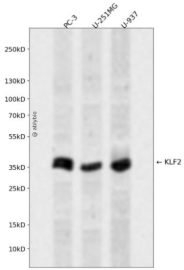
抗原信息	A synthetic peptide corresponding to a sequence within amino acids 100-200 of human KLF2 (NP_057354 .1).
序列	LDAPLGPALHGRFLLAPPGRVLVKAEPPEADGGGGYGAPGLTRGPRGLKREGAPGPAASCMRGPGGRRPPPPDTPPLSP DGPARLPAPGPRASFPPFGGP

靶点信息

研究背景	This gene encodes a protein that belongs to the Kruppel family of transcription factors. The encoded zinc finger protein is expressed early in mammalian development and is found in many different cell types. The protein acts to bind the CACCC box found in the promoter of target genes to activate their transcription. It plays a role in many processes during development and disease including adipogenesis, embryonic erythropoiesis, epithelial integrity, inflammation and t-cell viability.
------	---

基因ID	10365
基因名	KLF2
Swiss	Q9Y5W3
别名	KLF2;LKLF

产品验证



Western blot analysis of KLF2 expressed in PC-3,U-251MG,U-937 using KLF2 Rabbit pAb at 1:1000. Secondary antibody: HRP Goat Anti-Rabbit IgG (H+L) at 1:5000. Lysates/proteins: 30ug per lane. Blocking buffer: 5% non-fat dry milk in TBST. Detection: ECL Enhanced Kit. Exposure time: 120s.

实验步骤

访问官网浏览详情: www.ablybio.cn