

# LONP1 Rabbit pAb

货号: **AYP11549**

## 产品信息

反应	Human,Mouse,Rat
宿主	Rabbit
克隆性	Polyclonal
预测反应	<b>WB:</b> Mus musculus , Homo sapiens , Rattus norvegicus <b>IF:</b> Rattus norvegicus
应用	<a href="#">WB</a> <a href="#">IHC</a> <a href="#">IF/ICC</a> <a href="#">IP</a>
推荐浓度	<b>WB:</b> 1:500 - 1:2000 <b>IHC:</b> 1:50 - 1:200 <b>IF/ICC:</b> 1:50 - 1:200 <b>IP:</b> 1:500 - 1:1000
理论分子量	85kDa/100kDa/106kDa
实测分子量	106kDa
形式	Liquid
保存条件	Store at -20°C. Avoid freeze / thaw cycles. Buffer: PBS with 0.02% sodium azide,50% glycerol,pH7.3.
偶联物	Unconjugated
阳性对照	A-549,HL-60,LO2,HT-1080,BT-474,Mouse heart,Mouse kidney,Mouse liver,Rat kidney
细胞定位	Mitochondrion matrix
纯化	Affinity purification

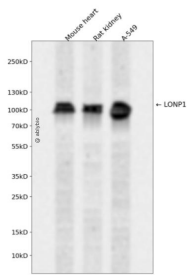
## 抗原信息

抗原信息	Recombinant fusion protein containing a sequence corresponding to amino acids 120-400 of human LONP 1 (NP_004784.2).
序列	VFPHLPLIAITRNPVFPFRFIKIEVKNKKLVELLRRKVRLAQPYVGVFLKRDDSNESDVVESLDEIYHTGTFAQIHEMQDLGDK LRMIVMGHRRVHISRQLEVEPEEPEAENKHKPRRKS KRGGKAEDELSARHPAELAMEPTPELPAEVL MVEVENVVHEDFQ VTEEVKALTAIEIVKTIRDIIALNPLYRESVLQMMQAGQRVVDNPIYLSDMGAALTGAESHELQDVLEETNIPKRLYKALSLLKK EFELSKLQQRLGREVEEKIKQTHRKYLLQEQL

## 靶点信息

研究背景	This gene encodes a mitochondrial matrix protein that belongs to the Lon family of ATP-dependent proteases. This protein mediates the selective degradation of misfolded, unassembled or oxidatively damaged polypeptides in the mitochondrial matrix. It may also have a chaperone function in the assembly of inner membrane protein complexes, and participate in the regulation of mitochondrial gene expression and maintenance of the integrity of the mitochondrial genome. Decreased expression of this gene has been noted in a patient with hereditary spastic paraplegia (PMID:18378094). Alternatively spliced transcript variants have been found for this gene.
基因ID	9361
基因名	LONP1
Swiss	P36776
别名	LONP1;CODASS;LON;LONP;LonHS;PIM1;PRSS15;hLON

## 产品验证



Western blot analysis of LONP1 expressed in Mouse heart,Rat kidney,A-549 using LONP1 Rabbit pAb at 1:1000. Secondary antibody: HRP Goat Anti-Rabbit IgG (H+L) at 1:5000. Lysates/proteins: 30ug per lane. Blocking buffer: 5% non-fat dry milk in TBST. Detection: ECL Enhanced Kit. Exposure time: 120s.

## 实验步骤

访问官网浏览详情: [www.ablybio.cn](http://www.ablybio.cn)