

# Cyclin A1 Rabbit pAb

货号: **AYP11547**

## 产品信息

反应	Human,Rat
宿主	Rabbit
克隆性	Polyclonal
预测反应	<b>IF:</b> Homo sapiens <b>WB:</b> Homo sapiens
应用	WB
推荐浓度	<b>WB:</b> 1:500 - 1:2000
理论分子量	47kDa/52kDa
实测分子量	52kDa
形式	Liquid
保存条件	Store at -20°C. Avoid freeze / thaw cycles. Buffer: PBS with 0.02% sodium azide,50% glycerol,pH7.3.
偶联物	Unconjugated
阳性对照	HL-60,U-87MG,Rat testis
细胞定位	Nucleus
纯化	Affinity purification

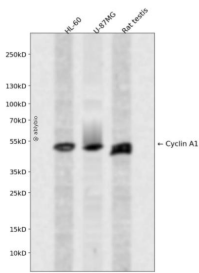
## 抗原信息

抗原信息	Recombinant fusion protein containing a sequence corresponding to amino acids 1-230 of human CCNA1 (NP_001104515.1).
序列	METGFPAIMYPGSFIGGWGEEYLSWEGPGLPDFVFQQPVESEAMHCSNPKSGVVLATVARGPDACQILTRAPLGQDPPQ RTVLGLLTANGQYRRTCGQGITRIRCYSGSENAFPPAGKKALPDCGVQEPKQGFDIYMDELEQGDRDSCSVREGMAFE DVYEVDGTGLKSDLHFLDFNTVSPMLVDSSLLSQSEDISSLGTDVINVTEYAEIYQYLREAEIRHRPKAH

## 靶点信息

研究背景	The protein encoded by this gene belongs to the highly conserved cyclin family, whose members are characterized by a dramatic periodicity in protein abundance through the cell cycle. Cyclins function as regulators of CDK kinases. Different cyclins exhibit distinct expression and degradation patterns which contribute to the temporal coordination of each mitotic event. The cyclin encoded by this gene was shown to be expressed in testis and brain, as well as in several leukemic cell lines, and is thought to primarily function in the control of the germline meiotic cell cycle. This cyclin binds both CDK2 and CDC2 kinases, which give two distinct kinase activities, one appearing in S phase, the other in G2, and thus regulate separate functions in cell cycle. This cyclin was found to bind to important cell cycle regulators, such as Rb family proteins, transcription factor E2F-1, and the p21 family proteins. Multiple transcript variants encoding different isoforms have been found for this gene.
基因ID	8900
基因名	CCNA1
Swiss	P78396
别名	CCNA1;CT146;cyclin-A1

## 产品验证



Western blot analysis of Cyclin A1 expressed in HL-60,U-87MG,Rat testis using Cyclin A1 Rabbit pAb at 1:1000. Secondary antibody: HRP Goat Anti-Rabbit IgG (H+L) at 1:5000. Lysates/proteins: 30ug per lane. Blocking buffer: 5% non-fat dry milk in TBST. Detection: ECL Enhanced Kit. Exposure time: 120s.

## 实验步骤

访问官网浏览详情: [www.ablybio.cn](http://www.ablybio.cn)